

For Research Use Only

# Mouse IgG1 Isotype Control (MOPC-21)

Catalog Number: 65124-1-Ig



## Basic Information

Catalog Number:

65124-1-Ig

Size:

500ug, 0.5 mg/ml

Source:

Mouse

Isotype:

IgG1, kappa

GenBank Accession Number:

GeneID (NCBI):

16017

UNIPROT ID:

P01868

Full Name:

immunoglobulin heavy constant  
gamma 1 (G1m marker)

Purification Method:

Affinity purification

CloneNo.:

MOPC-21

## Applications

Tested Applications:

FC

Species Specificity:

n/a

## Background Information

The MOPC-21 immunoglobulin is useful as an isotype-matched control. The MOPC-21 immunoglobulin has an unknown binding specificity and is used as an isotype control for mouse IgG1 antibodies. This antibody has been quality-tested for flow cytometry as negative control.

## Storage

Storage:

Store at 2-8°C. Stable for one year after shipment.

Storage Buffer:

PBS with 0.09% sodium azide.

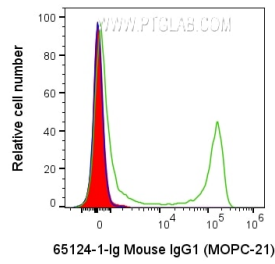
For technical support and original validation data for this product please contact:

T: 1 (888) 4PTGLAB (1-888-478-4522) (toll free  
in USA), or 1(312) 455-8498 (outside USA)

E: [proteintech@ptglab.com](mailto:proteintech@ptglab.com)  
W: [ptglab.com](http://ptglab.com)

This product is exclusively available under Proteintech Group brand and is not available to purchase from any other manufacturer.

## Selected Validation Data



$1 \times 10^6$  human PBMCs were surface stained with 0.2  $\mu$ g Anti-Mouse IgG1 Isotype Control (65124-1-Ig, Clone:MOPC-21) (red) or 0.2  $\mu$ g Anti-Human CD8a (65113-1-Ig, Clone:Hit8a) (green) and CoraLite®647-conjugated AffiniPure F(ab')<sub>2</sub> Fragment Goat Anti-Mouse IgG (H+L) (SA00014-8) at dilution 1:1000 or unstained (blue). Cells were not fixed. Lymphocytes were gated.