

For Research Use Only

# Mouse IgG2b Isotype Control (MPC-11)



Catalog Number: **65128-1-Ig**

## Basic Information

<b>Catalog Number:</b> 65128-1-Ig	<b>GenBank Accession Number:</b> GeneID (NCBI): 16016	<b>Purification Method:</b> Affinity purification
<b>Size:</b> 500ug, 0.5 mg/ml	<b>Full Name:</b> immunoglobulin heavy chain 3 (serum IgG2b)	<b>CloneNo.:</b> MPC-11
<b>Source:</b> Mouse		
<b>Isotype:</b> IgG2b		

## Applications

**Tested Applications:**  
FC  
**Species Specificity:**

## Background Information

The MPC-11 immunoglobulin is useful as an isotype-matched control. The MPC-11 immunoglobulin has an unknown binding specificity and is used as an isotype control for mouse IgG2b antibodies. This antibody has been quality-tested for flow cytometry as negative control.

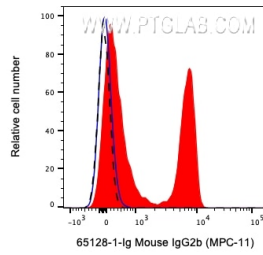
## Storage

**Storage:**  
Store at 2-8°C. Stable for one year after shipment.  
**Storage Buffer:**  
PBS with 0.09% sodium azide.

For technical support and original validation data for this product please contact:  
T: 1 (888) 4PTGLAB (1-888-478-4522) (toll free in USA), or 1(312) 455-8498 (outside USA)      E: [proteintech@ptglab.com](mailto:proteintech@ptglab.com)  
W: [ptglab.com](http://ptglab.com)

**This product is exclusively available under Proteintech Group brand and is not available to purchase from any other manufacturer.**

## Selected Validation Data



1X10<sup>6</sup> human PBMCs were surface stained with 0.2 ug Mouse IgG2b Isotype Control (65128-1-Ig, Clone:MPC-11) (blue), or Anti-Human CD4 (red) followed by CoraLite®594-Conjugated AffiniPure Goat Anti-Mouse IgG(H+L) at dilution 1:1000 or unstained (black). Cells were not fixed. Lymphocytes were gated.