

For Research Use Only

Anti-Mouse NK1.1 (CD161) (PK136)

Catalog Number: 65138-1-Ig



Basic Information

Catalog Number:

65138-1-Ig

Size:

500ug, 0.5 mg/ml

Source:

Mouse

Isotype:

IgG2a, kappa

GenBank Accession Number:

BC120707

GeneID (NCBI):

17057

UNIPROT ID:

P27811

Full Name:

killer cell lectin-like receptor
subfamily B member 1A

Purification Method:

Affinity purification

CloneNo.:

PK136

Applications

Tested Applications:

FC

Species Specificity:

Mouse

Background Information

NK1.1 (CD161), also known as KLRB1 or NKR-P1A, is a type II transmembrane C-type lectin-like receptor and is expressed on the cell membrane as disulfide-linked homodimer (PMID: 8077657). It is expressed by the majority of NK cells and subsets of peripheral T cells, including both CD4+ and CD8+ T cells, and is expressed preferentially on adult T cells with a "memory" antigenic phenotype (PMID: 8077657; 22566826). Expression of CD161 correlates with the cytotoxic function of CD16+ NK cells, and ligation of CD161 with its ligand LLT1 inhibits NK cell cytotoxicity and cytokine secretion (PMID: 29686665).

Storage

Storage:

Store at 2-8°C. Stable for one year after shipment.

Storage Buffer:

PBS with 0.09% sodium azide.

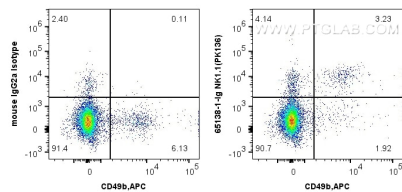
For technical support and original validation data for this product please contact:

T: 1 (888) 4PTGLAB (1-888-478-4522) (toll free
in USA), or 1(312) 455-8498 (outside USA)

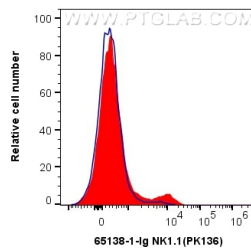
E: proteintech@ptglab.com
W: ptglab.com

This product is exclusively available under Proteintech Group brand and is not available to purchase from any other manufacturer.

Selected Validation Data



1X10⁶ C57BL/6 mouse splenocytes were surface co-stained with APC Anti-Mouse CD49b (DX5) and 0.5 ug Anti-Mouse NK1.1 (CD161) (65138-1-Ig, Clone:PK136) and FITC anti-Mouse IgG2a Antibody at dilution 1:100, or 0.5 ug Mouse IgG2a Isotype Control (C1.18.4) and FITC anti-Mouse IgG2a Antibody at dilution 1:100. Cells were not fixed.



1X10⁶ C57BL/6 mouse splenocytes were surface stained with 0.5 ug Anti-Mouse NK1.1 (CD161) (65138-1-Ig, Clone:PK136) and FITC anti-Mouse IgG2a Antibody at dilution 1:100, or 0.5 ug Mouse IgG2a Isotype Control (C1.18.4) and FITC anti-Mouse IgG2a Antibody at dilution 1:100. Cells were not fixed.