

For Research Use Only

# Anti-Human CD8 (SK1)

Catalog Number: 65146-1-Ig



## Basic Information

Catalog Number:

65146-1-Ig

Size:

100ug , 500 µg/ml

Source:

Mouse

Isotype:

IgG1, kappa

GenBank Accession Number:

BC025715

GeneID (NCBI):

925

ENSEMBL Gene ID:

ENSG00000153563

Full Name:

CD8a molecule

Calculated MW:

235 aa, 26 kDa

Purification Method:

Affinity purification

CloneNo.:

SK1

## Applications

Tested Applications:

FC

Species Specificity:

Human

## Background Information

CD8 is a transmembrane glycoprotein composed of two disulfide-linked chains. It can be present as a homodimer of CD8α or as a heterodimer of CD8α and CD8β (PMID: 3264320; 8253791). CD8 is found on most thymocytes. The majority of class I-restricted T cells express mostly the CD8αβ heterodimer while CD8αα homodimers alone have been found on some gut intraepithelial T cells, on some T cell receptor (TCR) γδ T cells and on NK cells (PMID: 2111591; 1831127; 8420975). CD8 acts as a co-receptor that binds to MHC class-I and participates in cytotoxic T cell activation (PMID: 8499079). During T cell development, CD8 is required for positive selection of CD4-/CD8+ T cells (PMID: 1968084).

## Storage

Storage:

Store at 2-8°C. Stable for one year after shipment.

Storage Buffer:

PBS with 0.09% sodium azide.

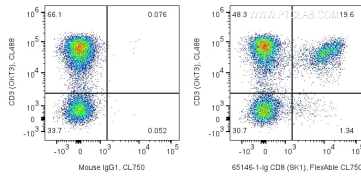
For technical support and original validation data for this product please contact:

T: 1 (888) 4PTGLAB (1-888-478-4522) (toll free in USA), or 1(312) 455-8498 (outside USA)

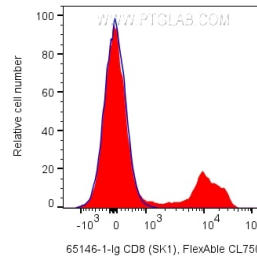
E: [proteintech@ptglab.com](mailto:proteintech@ptglab.com)  
W: [ptglab.com](http://ptglab.com)

This product is exclusively available under Proteintech Group brand and is not available to purchase from any other manufacturer.

## Selected Validation Data



1X10<sup>6</sup> human PBMCs were surface stained with CoraLite® Plus 488 Anti-Human CD3 and 0.2 ug Anti-Human CD8 (65146-1-Ig, Clone:SK1) labeled with FlexAble CoraLite® Plus 750 Antibody Labeling Kit for Mouse IgG1 (KFA024) (right), or Mouse IgG1 Isotype Control (left). Cells were not fixed. Lymphocytes were gated.



1X10<sup>6</sup> human PBMCs were surface stained with 0.2 ug Anti-Human CD8 (65146-1-Ig, Clone:SK1) labeled with FlexAble CoraLite® Plus 750 Antibody Labeling Kit for Mouse IgG1 (KFA024) (red), or Mouse IgG1 Isotype Control (blue). Cells were not fixed. Lymphocytes were gated.