

For Research Use Only

Anti-Human CD4 (SK3), PBS Only

Catalog Number: 65147-1-PBS



Basic Information

Catalog Number: 65147-1-PBS	GenBank Accession Number: BC025782	Purification Method: Affinity purification
Size: 100ug, 2mg/ml	GeneID (NCBI): 920	CloneNo.: SK3
Source: Mouse	ENSEMBL Gene ID: ENSG00000010610	Affinity: $K_D = 8.82 \times 10^{-11}M$
Isotype: IgG1, kappa	Full Name: CD4 molecule	$K_{off} = 2.00 \times 10^{-5}M$
	Calculated MW: 55 kDa	$K_{on} = 2.26 \times 10^5M$

Applications

Tested Applications:
FC, Sandwich ELISA, Indirect ELISA

Species Specificity:
human

Product Information

65147-1-PBS targets CD4 as part of a matched antibody pair:

MP50077-1: 65147-1-PBS capture and 68688-1-PBS detection (validated in Sandwich ELISA)

Unconjugated mouse monoclonal antibody pair in PBS only (BSA and azide free) storage buffer at a concentration of 1 mg/mL, ready for conjugation.

This conjugation ready format makes antibodies ideal for use in many applications including: ELISAs, multiplex assays requiring matched pairs, mass cytometry, and multiplex imaging applications. Antibody use should be optimized by the end user for each application and assay.

Background Information

CD4 is a 55-kDa transmembrane glycoprotein expressed on T helper cells, majority of thymocytes, monocytes, macrophages, and dendritic cells (PMID: 9304802; 12213222). CD4 is an accessory protein for MHC class-II antigen/T-cell receptor interaction. It plays an important role in T helper cell development and activation (PMID: 9539765; 3112582). CD4 serves as a receptor for the human immunodeficiency virus (HIV) (PMID: 9304802).

Storage

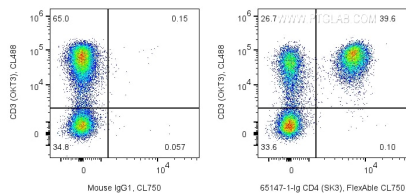
Storage:
Store at -80°C.

Storage Buffer:
PBS only, pH7.3

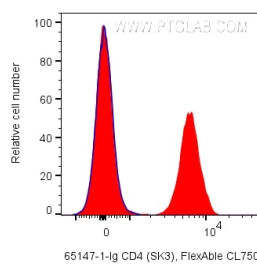
For technical support and original validation data for this product please contact:
T: 1 (888) 4PTGLAB (1-888-478-4522) (toll free in USA), or 1(312) 455-8498 (outside USA)
E: proteintech@ptglab.com
W: ptglab.com

This product is exclusively available under Proteintech Group brand and is not available to purchase from any other manufacturer.

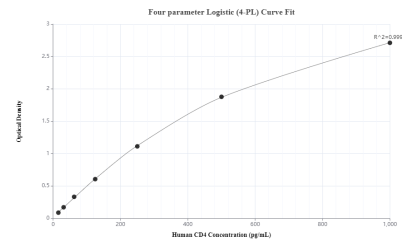
Selected Validation Data



1X10⁶ human PBMCs were surface stained with CoraLite® Plus 488 Anti-Human CD3 and 0.2 ug Anti-Human CD4 (65147-1-Ig, Clone:SK3) labeled with FlexAble CoraLite® Plus 750 Antibody Labeling Kit for Mouse IgG1 (KFA024) (right), or Mouse IgG1 Isotype Control (left). Cells were not fixed. Lymphocytes were gated. This data was developed using the same antibody clone with 65147-1-PBS in a different storage buffer formulation.



1X10⁶ human PBMCs were surface stained with 0.2 ug Anti-Human CD4 (65147-1-Ig, Clone:SK3) labeled with FlexAble CoraLite® Plus 750 Antibody Labeling Kit for Mouse IgG1 (KFA024) (red), or Mouse IgG1 Isotype Control (blue). Cells were not fixed. Lymphocytes were gated. This data was developed using the same antibody clone with 65147-1-PBS in a different storage buffer formulation.



Sandwich ELISA standard curve of MP50077-1, CD4 Monoclonal Matched Antibody Pair - PBS only. 65147-1-PBS was coated to a plate as the capture antibody and incubated with serial dilutions of standard Eg0333. 68688-1-PBS was HRP conjugated as the detection antibody. Range: 15.6-1000 pg/mL