

For Research Use Only

Anti-Human CD206 (15-2)

Catalog Number: 65155-1-Ig



Basic Information

Catalog Number:

65155-1-Ig

Size:

100ug, 0.5 mg/ml

Source:

Mouse

Isotype:

IgG1, kappa

GenBank Accession Number:

NM_002438

GeneID (NCBI):

4360

UNIPROT ID:

P22897

Full Name:

mannose receptor, C type 1

Calculated MW:

166 kDa

Purification Method:

Purified by protein-A affinity chromatography

CloneNo.:

15-2

Applications

Tested Applications:

FC

Species Specificity:

human

Positive Controls:

FC : GM-CSF treated human PBMCs,

Background Information

CD206, also named as MMR, CLEC13D and MRC1, is a type I membrane receptor that mediates the endocytosis of glycoproteins by macrophages. CD206 has been shown to bind high-mannose structures on the surface of potentially pathogenic viruses, bacteria, and fungi so that they can be neutralized by phagocytic engulfment. CD206 is a 170 kDa transmembrane protein which contains 5 domains: an amino-terminal cysteine-rich region, a fibronectin type II repeat, a series of eight tandem lectin-like carbohydrate recognition domains (responsible for the recognition of mannose and fucose), a transmembrane domain, and an intracellular carboxy-terminal tail. It is expressed on most tissue macrophages, in vitro derived dendritic cells, lymphatic and sinusoidal endothelia.

Storage

Storage:

Store at 2-8°C. Stable for one year after shipment.

Storage Buffer:

PBS with 0.09% sodium azide, pH7.3

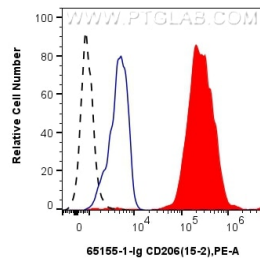
For technical support and original validation data for this product please contact:

T: 1 (888) 4PTGLAB (1-888-478-4522) (toll free in USA), or 1(312) 455-8498 (outside USA)

E: proteintech@ptglab.com
W: ptglab.com

This product is exclusively available under Proteintech Group brand and is not available to purchase from any other manufacturer.

Selected Validation Data



1×10^6 GM-CSF treated human PBMCs were surface stained with 0.25 μ g Anti-Human CD206 (15-2) (65155-1-Ig, Clone: 15-2) (red) or 0.25 μ g Mouse IgG1 Isotype Control (MOPC-21) (65124-1-Ig, Clone: MOPC-21) (blue), and PE-conjugated Goat Anti-Mouse IgG. 1×10^6 untreated human PBMCs were surface stained with 0.25 μ g Anti-Human CD206 (15-2) (65155-1-Ig, Clone: 15-2) (black, dashed) and PE-conjugated Goat Anti-Mouse IgG. Cells were not fixed.