

For Research Use Only

Anti-Human CD206 (15-2)

Catalog Number: 65155-1-Ig



Basic Information

Catalog Number: 65155-1-Ig	GenBank Accession Number: NM_002438	Purification Method: Purified by protein-A affinity chromatography
Size: 100ug, 1 mg/ml	GeneID (NCBI): 4360	CloneNo.: 15-2
Source: Mouse	Full Name: mannose receptor, C type 1	
Isotype: IgG1, kappa	Calculated MW: 166 kDa	

Applications

Tested Applications:
FC

Species Specificity:
Human

Background Information

CD206, also named as MMR, CLEC13D and MRC1, is a type I membrane receptor that mediates the endocytosis of glycoproteins by macrophages. CD206 has been shown to bind high-mannose structures on the surface of potentially pathogenic viruses, bacteria, and fungi so that they can be neutralized by phagocytic engulfment. CD206 is a 170 kDa transmembrane protein which contains 5 domains: an amino-terminal cysteine-rich region, a fibronectin type II repeat, a series of eight tandem lectin-like carbohydrate recognition domains (responsible for the recognition of mannose and fucose), a transmembrane domain, and an intracellular carboxy-terminal tail. It is expressed on most tissue macrophages, in vitro derived dendritic cells, lymphatic and sinusoidal endothelia.

Storage

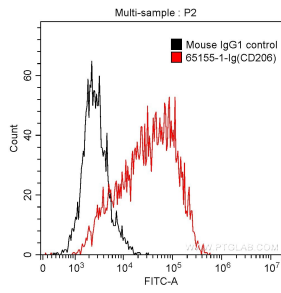
Storage:
Store at 2-8°C. Stable for one year after shipment.

Storage Buffer:
PBS with 0.1% sodium azide.

For technical support and original validation data for this product please contact:
T: 1 (888) 4PTGLAB (1-888-478-4522) (toll free in USA), or 1(312) 455-8498 (outside USA) E: proteintech@ptglab.com
W: ptglab.com

This product is exclusively available under Proteintech Group brand and is not available to purchase from any other manufacturer.

Selected Validation Data



Human monocyte-derived dendritic cells (monocytes stimulated with GM-CSF and IL-4) were surface stained with 0.5 ug Anti-Human CD206 (65155-1-Ig, Clone:15-2) and CoraLite®488-Conjugated AffiniPure Goat Anti-Mouse IgG(H+L) at dilution 1:1000 (red), or stained with 0.5 ug mouse IgG1 isotype control and CoraLite®488-Conjugated AffiniPure Goat Anti-Mouse IgG(H+L) at dilution 1:1000 (black). Cells were not fixed.