

For Research Use Only

Anti-Human CD72 (3F3)

Catalog Number: 65157-1-Ig



Basic Information

Catalog Number: 65157-1-Ig	GenBank Accession Number: BC011734	Purification Method: Purified by precipitation and chromatography
Size: 100ug, 1 mg/ml	GeneID (NCBI): 971	CloneNo.: 3F3
Source: Mouse	Full Name: CD72 molecule	
Isotype: IgG2b, kappa		

Applications

Tested Applications:
FC

Species Specificity:
Human

Background Information

CD72 is a type II transmembrane glycoprotein of 39-45 kDa and is expressed as a disulphide-linked homodimer (PMID: 1711157). CD72 is a pan B-cell marker covering the full range of differentiation from the very early stages of B cells to mature surface Ig+ B cells (PMID: 1384316). It is expressed in all stages of B cell development except plasma cells. CD72 is also expressed by dendritic cells, tissue macrophages in the red pulp of the spleen and von Kupffer cells in the liver (PMID: 8561576; 1384316). CD72 is the ligand for CD5 (PMID: 1711157). CD72 is a negative regulator of BCR signaling (PMID: 9590210). Interaction of CD100 with CD72 strictly tunes the strength of BCR signals and is essential for maintaining immunological homeostasis as well as generating a proper immune response (PMID: 16113236).

Storage

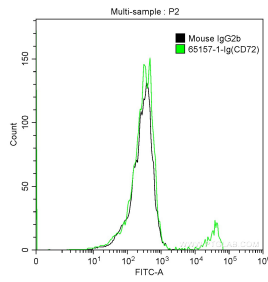
Storage:
Store at 2-8°C. Stable for one year after shipment.

Storage Buffer:
PBS with 0.1% sodium azide.

For technical support and original validation data for this product please contact:
T: 1 (888) 4PTGLAB (1-888-478-4522) (toll free in USA), or 1(312) 455-8498 (outside USA) E: proteintech@ptglab.com
W: ptglab.com

This product is exclusively available under Proteintech Group brand and is not available to purchase from any other manufacturer.

Selected Validation Data



1X10⁶ human peripheral blood lymphocytes were surface stained with 0.5 ug Anti-Human CD72 (65157-1-Ig, Clone: 3F3) and CoraLite®488-Conjugated AffiniPure Goat Anti-Mouse IgG(H+L) at dilution 1:1000 (green), or stained with 0.5 ug isotype control and CoraLite®488-Conjugated AffiniPure Goat Anti-Mouse IgG(H+L) at dilution 1:1000 (black). Cells were not fixed.