

For Research Use Only

# Anti-Human MICA/MICB (6D4)

Catalog Number: 65161-1-Ig **3 Publications**



## Basic Information

Catalog Number:  
65161-1-Ig

Size:  
500ug, 0.5 mg/ml

Source:  
Mouse

Isotype:  
IgG2a, kappa

GenBank Accession Number:  
BC016929

GeneID (NCBI):  
100507436

Full Name:  
MHC class I polypeptide-related  
sequence A

Calculated MW:  
383 aa, 43 kDa

Purification Method:  
Purified by protein-A affinity  
chromatography

CloneNo.:  
6D4

## Applications

Tested Applications:  
FC

Cited Applications:  
WB

Species Specificity:  
Human

Cited Species:  
human

## Background Information

Human MHC class I chain-related genes located within the HLA class I region of chromosome 6 encode MHC class I chain-related A and B (MICA and MICB) (PMID: 11429322). MICA and MICB are stress-inducible surface molecules that are not associated with  $\beta$ 2-microglobulin and do not present peptides (PMID: 9497295). They are expressed in intestinal epithelium and many epithelial tumors (PMID: 10359807). MICA and MICB are ligands for NKG2D which is an activating receptor that is expressed on most natural killer (NK) cells, CD8  $\alpha\beta$  T cells, and  $\gamma\delta$  T cells (PMID: 10426993; 11491531). The monoclonal antibody 6D4 recognizes MICA and MICB.

## Notable Publications

Author	Pubmed ID	Journal	Application
Fei Liu	36497344	Cancers (Basel)	WB
Yang Wang	32349046	J Immunother	WB
Hui-Yang Wu	34999394	Int Immunopharmacol	WB

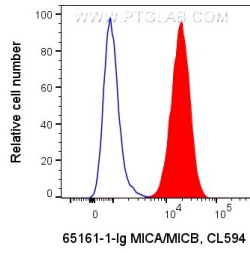
## Storage

Storage:  
Store at 2-8°C. Stable for one year after shipment.  
Storage Buffer:  
PBS with 0.09% sodium azide.

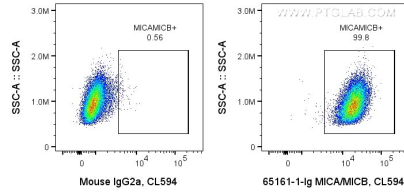
For technical support and original validation data for this product please contact:  
T: 1 (888) 4PTGLAB (1-888-478-4522) (toll free in USA), or 1(312) 455-8498 (outside USA)  
E: proteintech@ptglab.com  
W: ptglab.com

This product is exclusively available under Proteintech Group brand and is not available to purchase from any other manufacturer.

## Selected Validation Data



$1 \times 10^6$  HeLa cells were surface stained with 0.2 ug Anti-Human MICA/MICB (65161-1-Ig, Clone: 6D4) or Mouse IgG2a Isotype Control and CoraLite®594-Conjugated AffiniPure Goat Anti-Mouse IgG(H+L) at dilution 1:1000. Cells were not fixed.



$1 \times 10^6$  HeLa cells were surface stained with 0.2 ug Anti-Human MICA/MICB (65161-1-Ig, Clone: 6D4) or Mouse IgG2a Isotype Control and CoraLite®594-Conjugated AffiniPure Goat Anti-Mouse IgG(H+L) at dilution 1:1000. Cells were not fixed.