

For Research Use Only

# Anti-Human CD62P (AK4)

Catalog Number: 65164-1-Ig



## Basic Information

<b>Catalog Number:</b> 65164-1-Ig	<b>GenBank Accession Number:</b> BC028067	<b>Purification Method:</b> Purified by protein-A affinity chromatography
<b>Size:</b> 100ug, 0.5 mg/ml	<b>GeneID (NCBI):</b> 6403	<b>CloneNo.:</b> AK4
<b>Source:</b> Mouse	<b>Full Name:</b> selectin P (granule membrane protein 140kDa, antigen CD62)	
<b>Isotype:</b> IgG1, kappa	<b>Calculated MW:</b> 830 aa, 91 kDa	

## Applications

**Tested Applications:**  
FC

**Species Specificity:**  
Human, Non-human primates

## Background Information

P-selectin, also known as GMP140 or CD62P, is a transmembrane glycoprotein that mediates the interaction of activated endothelial cells or platelets with leukocytes. It is an adhesion molecule involved in the pathogenesis of inflammation, thrombosis, and oncogenesis. P-selectin is stored in the alpha-granules of platelets and Weibel-Palade bodies of endothelial cells. Upon cell activation by agonists, P-selectin is transported rapidly to the cell surface.

## Storage

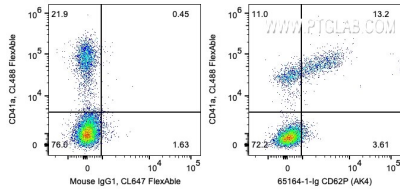
**Storage:**  
Store at 2-8°C. Stable for one year after shipment.

**Storage Buffer:**  
PBS with 0.09% sodium azide.

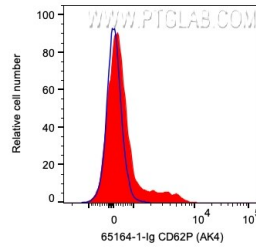
For technical support and original validation data for this product please contact:  
T: 1 (888) 4PTGLAB (1-888-478-4522) (toll free in USA), or 1(312) 455-8498 (outside USA)      E: proteintech@ptglab.com  
W: ptglab.com

**This product is exclusively available under Proteintech Group brand and is not available to purchase from any other manufacturer.**

## Selected Validation Data



1X10<sup>6</sup> thrombin-activated human peripheral blood platelets were surface co-stained with Anti-Human CD41a labeled with FlexAble CL488 and 0.2 ug Anti-Human CD62P (65164-1-Ig, Clone:AK4) labeled with FlexAble CL647. Cells were not fixed.



1X10<sup>6</sup> thrombin-activated human peripheral blood platelets were surface stained with 0.2 ug Anti-Human CD62P (65164-1-Ig, Clone:AK4) labeled with FlexAble CL647. Cells were not fixed.