

For Research Use Only

Anti-Human CD62L (DREG56)

Catalog Number: 65167-1-Ig



Basic Information

Catalog Number: 65167-1-Ig	GenBank Accession Number: BC020758	Purification Method: Purified by protein-A affinity chromatography
Size: 100ug, 1 mg/ml	GeneID (NCBI): 6402	CloneNo.: DREG56
Source: Mouse	Full Name: selectin L	
Isotype: Mouse IgG1	Calculated MW: 42 kDa	

Applications

Tested Applications:
FC

Species Specificity:
Human

Background Information

CD62L, also known as L-selectin or SELL, is a member of the selectin family of adhesion molecules that also include CD62E (E-selectin) and CD62P (P-selectin) (PMID: 2663882, 2473156, 1382078). CD62L is a highly glycosylated protein of 95-105 kDa on neutrophils and 74 kDa on lymphocytes (PMID: 1382078; 1694883, 1695155). CD62L is expressed on the surface of most leukocytes, including lymphocytes, neutrophils, monocytes, eosinophils, hematopoietic progenitor cells, and immature thymocytes (PMID: 1694883, 1688580). It mediates the binding of lymphocytes to high endothelial venules (HEV) of peripheral lymph nodes through interactions with a constitutively expressed ligand, and is also involved in lymphocyte, neutrophil, and monocyte attachment to endothelium at sites of inflammation (PMID: 1382078).

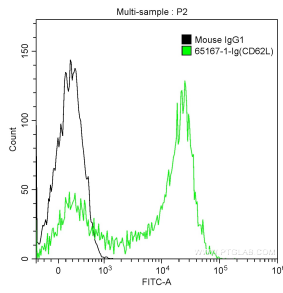
Storage

Storage:
Store at 2-8°C.
Storage Buffer:
PBS with 0.1% sodium azide.

For technical support and original validation data for this product please contact:
T: 1 (888) 4PTGLAB (1-888-478-4522) (toll free in USA), or 1(312) 455-8498 (outside USA) E: proteintech@ptglab.com W: ptglab.com

This product is exclusively available under Proteintech Group brand and is not available to purchase from any other manufacturer.

Selected Validation Data



1X10⁶ human peripheral blood lymphocytes were surface stained with 0.5 ug Anti-Human CD62L (65167-1-Ig, Clone: DREG56) (green) or 0.5 ug isotype control antibody (black), and CoraLite®488-Conjugated AffiniPure Goat Anti-Mouse IgG(H+L). Cells were not fixed.