

For Research Use Only

Anti-Human Glycophorin A/CD235a (HIR2)

Catalog Number: 65174-1-Ig



Basic Information

Catalog Number:

65174-1-Ig

Size:

100ug, 0.5 mg/ml

Source:

Mouse

Isotype:

IgG2b, kappa

GenBank Accession Number:

BC005319

GeneID (NCBI):

2993

UNIPROT ID:

P02724

Full Name:

glycophorin A (MNS blood group)

Calculated MW:

150 aa, 16 kDa

Purification Method:

Affinity purification

CloneNo.:

HIR2

Applications

Tested Applications:

FC

Species Specificity:

human

Background Information

Glycophorin A (GYPA) is the major transmembrane sialoglycoprotein in erythrocytes. It is a dimeric type I transmembrane protein carrying 15 closely clustered O-linked tetrasaccharides capped with sialic acid/N-acetylneuraminic acid (Neu5Ac). This 36 kDa protein represents the major sialoglycoprotein of the red blood cell membrane displaying about one million copies per cell. (PMID: 9490702)

Storage

Storage:

Store at 2-8°C. Stable for one year after shipment.

Storage Buffer:

PBS with 0.09% sodium azide.

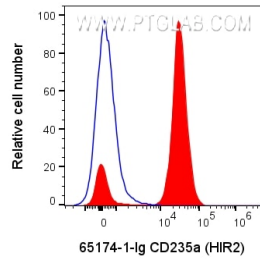
For technical support and original validation data for this product please contact:

T: 1 (888) 4PTGLAB (1-888-478-4522) (toll free in USA), or 1(312) 455-8498 (outside USA)

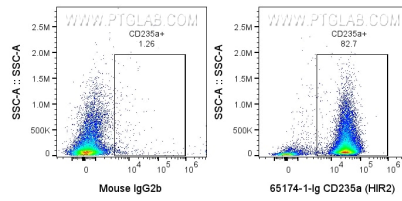
E: proteintech@ptglab.com
W: ptglab.com

This product is exclusively available under Proteintech Group brand and is not available to purchase from any other manufacturer.

Selected Validation Data



100 ul human peripheral blood (diluted 1:15 with PBS) was surface stained with 0.2 ug Anti-Human CD235a (65174-1-Ig, Clone:HIR2) or Mouse IgG2b Isotype Control (65128-1-Ig, Clone: MPC-11) and Multi-rAb CoraLite® Plus 647-Goat Anti-Mouse Recombinant Secondary Antibody (H+L) (RGAM005). Cells were not fixed.



100 ul human peripheral blood (diluted 1:15 with PBS) was surface stained with 0.2 ug Anti-Human CD235a (65174-1-Ig, Clone:HIR2) or Mouse IgG2b Isotype Control (65128-1-Ig, Clone: MPC-11) and Multi-rAb CoraLite® Plus 647-Goat Anti-Mouse Recombinant Secondary Antibody (H+L) (RGAM005). Cells were not fixed.