

For Research Use Only

Anti-Human CD146 (P1H12)

Catalog Number: 65181-1-Ig **2 Publications**



Basic Information

Catalog Number:

65181-1-Ig

Size:

100ug, 0.5 mg/ml

Source:

Mouse

Isotype:

IgG1, kappa

GenBank Accession Number:

BC056418

GeneID (NCBI):

4162

UNIPROT ID:

P43121

Full Name:

melanoma cell adhesion molecule

Calculated MW:

646 aa, 72 kDa

Purification Method:

Purified by protein-A affinity chromatography

CloneNo.:

P1H12

Recommended Dilutions:

IF/ICC 1:500-1:2000

Applications

Tested Applications:

IF/ICC, FC

Cited Applications:

FC

Species Specificity:

human, mouse, rabbit, canine

Cited Species:

human

Positive Controls:

IF/ICC : HUVEC cells,

Background Information

CD146, also known as melanoma cell adhesion molecule (MCAM) or MUC18, originally identified as a biomarker of melanoma progression, is a transmembrane glycoprotein of 113-130 kDa, belonging to the immunoglobulin (Ig) superfamily (PMID: 8378324; 25993332). Structurally, it consists of five Ig domains, a transmembrane domain, and a cytoplasmic region. In normal adult tissue, CD146 is primarily expressed by vascular endothelium and smooth muscle. CD146 is a key cell adhesion protein in vascular endothelial cell activity and angiogenesis, and has been used as marker of circulating endothelium cells (CECs) (PMID: 19356677). In addition to the membrane-anchored form of CD146, a soluble form of CD146 (sCD146, 105 kDa) has also been found in human plasma and in the supernatant of cultured human endothelial cells (PMID: 9462829; 19229070; 16374253; 14597988).

Notable Publications

Author	Pubmed ID	Journal	Application
Xun Xi	35071244	Front Cell Dev Biol	FC
Han Li	37055866	Stem Cell Res Ther	FC

Storage

Storage:

Store at 2-8°C. Stable for one year after shipment.

Storage Buffer:

PBS with 0.09% sodium azide

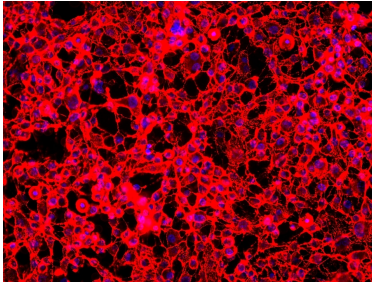
For technical support and original validation data for this product please contact:

T: 1 (888) 4PTGLAB (1-888-478-4522) (toll free in USA), or 1(312) 455-8498 (outside USA)

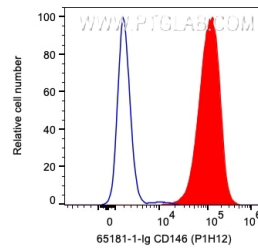
E: proteintech@ptglab.com
W: ptglab.com

This product is exclusively available under Proteintech Group brand and is not available to purchase from any other manufacturer.

Selected Validation Data



Immunofluorescent analysis of un-fixed HUVEC cells using CD146 antibody (65181-1-Ig, Clone: P1H12) at dilution of 1:1000 and Multi-rAb CoraLite® Plus 594-Goat Anti-Mouse Recombinant Secondary Antibody (H+L) (RGAM004).



1X10⁶ HeLa cells were surface stained with 0.2 ug Anti-Human CD146 (65181-1-Ig, Clone:P1H12) and APC-conjugated Goat Anti-Mouse IgG at dilution 1:1000. Cells were not fixed.