

For Research Use Only

# Anti-Human CDK1 (POH-1)

Catalog Number: 65182-1-Ig **3 Publications**



## Basic Information

### Catalog Number:

65182-1-Ig

### Size:

100ug, 1 mg/ml

### Source:

Mouse

### Isotype:

IgG2a, kappa

### GenBank Accession Number:

BC014563

### GeneID (NCBI):

983

### UNIPROT ID:

P06493

### Full Name:

cell division cycle 2, G1 to S and G2 to M

### Calculated MW:

25 kDa

### Observed MW:

30-34 kDa

### Purification Method:

Purified by protein-A affinity chromatography

### CloneNo.:

POH-1

### Recommended Dilutions:

WB: 1:500-1:2000

FC (Intra): 1 ug per 10<sup>6</sup> cells in 100 µl suspension

FC:

## Applications

### Tested Applications:

WB, FC (Intra)

### Cited Applications:

WB

### Species Specificity:

Human, Bovine

### Cited Species:

human, sheep

### Positive Controls:

WB : A431 cells, HEK-293 cells, HeLa cells, K-562 cells

FC (Intra) : HeLa cells,

FC : HeLa cells,

## Background Information

CDK1, also named as CDC2, belongs to the protein kinase superfamily, CMGC Ser/Thr protein kinase family and CDC2/CDKX subfamily. CDK1 plays a key role in the control of the eukaryotic cell cycle. It is required in higher cells for entry into S-phase and mitosis. CDK1 is a catalytic subunit of the highly conserved protein kinase complex known as M-phase promoting factor (MPF), which is essential for G1/S and G2/M phase transitions of eukaryotic cell cycle. It is a component of the kinase complex that phosphorylates the repetitive C-terminus of RNA polymerase II. Mitotic cyclins stably associate with CDK1 and function as regulatory subunits. CDK1 has 2 isoforms produced by alternative splicing with the molecular mass of 34 kDa and 27 kDa.

## Notable Publications

Author	Pubmed ID	Journal	Application
Qian Chen	39397245	Zool Res	WB
Wei Liu	39240463	Discov Oncol	WB
Masato Yoshizawa	38151292	Cancer Genomics Proteomics	WB

## Storage

### Storage:

Store at 2-8°C. Stable for one year after shipment.

### Storage Buffer:

PBS with 0.09% sodium azide, pH7.3

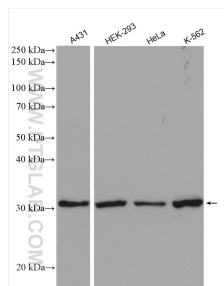
For technical support and original validation data for this product please contact:

T: 1 (888) 4PTGLAB (1-888-478-4522) (toll free in USA), or 1(312) 455-8498 (outside USA)

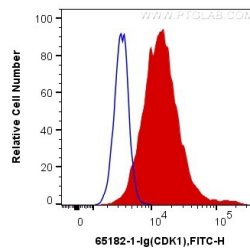
E: [proteintech@ptglab.com](mailto:proteintech@ptglab.com)  
W: [ptglab.com](http://ptglab.com)

This product is exclusively available under Proteintech Group brand and is not available to purchase from any other manufacturer.

## Selected Validation Data



Various lysates were subjected to SDS PAGE followed by western blot with 65182-1-Ig (CDK1 antibody) at dilution of 1:1000 incubated at room temperature for 1.5 hours.



$1 \times 10^6$  HeLa cells were intracellularly stained with 1 ug Anti-Human CDK1 (65182-1-Ig, Clone:POH-1) and CoraLite®488-Conjugated Goat Anti-Mouse IgG(H+L) at dilution 1:1000 (red), or 1 ug Mouse IgG2a Isotype Control (66360-2-Ig, Clone: K11A1B2A2) and CoraLite®488-Conjugated Goat Anti-Mouse IgG(H+L) at dilution 1:1000 (blue). Cells were fixed with 4% PFA and permeabilized with Intracellular Staining Permeabilization Wash Buffer.