

For Research Use Only

Anti-Human CD29 (TS2/16)

Catalog Number: 65191-1-Ig **2 Publications**



Basic Information

Catalog Number:

65191-1-Ig

Size:

100ug , 500 µg/ml

Source:

Mouse

Isotype:

IgG1, kappa

GenBank Accession Number:

BC020057

GeneID (NCBI):

3688

ENSEMBL Gene ID:

ENSG00000150093

UNIPROT ID:

P05556

Full Name:

integrin, beta 1 (fibronectin receptor,
beta polypeptide, antigen CD29
includes MDF2, MSK12)

Calculated MW:

88 kDa

Purification Method:

Protein A purification

CloneNo.:

TS2/16

Applications

Tested Applications:

FC

Cited Applications:

IF, FC

Species Specificity:

human

Cited Species:

human

Background Information

Integrin beta-1 (ITGB1), also named as CD29, is a 130 kDa single chain type I glycoprotein that is expressed in a heterodimeric complex with one of six distinct α subunits, comprising the very late activation antigen (VLA) subfamily of adhesion receptors. It is one of the essential surface molecules expressed on human MSC from bone marrow and other sources. The β 1 subunit is also broadly expressed on lymphocytes and monocytes, weakly expressed on granulocytes, and not expressed on erythrocytes. These receptors are involved in a variety of cell-cell and cell-matrix interactions.

Notable Publications

Author	Pubmed ID	Journal	Application
Junjie Liu	34707701	Exp Ther Med	FC
Baihe Han	35968497	Dis Markers	FC

Storage

Storage:

Store at 2-8°C. Stable for one year after shipment.

Storage Buffer:

PBS with 0.09% sodium azide.

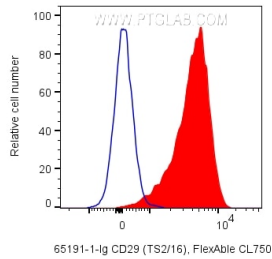
For technical support and original validation data for this product please contact:

T: 1 (888) 4PTGLAB (1-888-478-4522) (toll free
in USA), or 1(312) 455-8498 (outside USA)

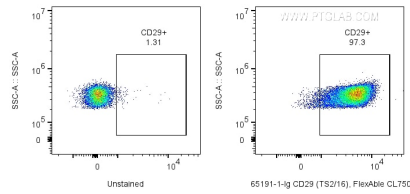
E: proteintech@ptglab.com
W: ptglab.com

This product is exclusively available under Proteintech Group brand and is not available to purchase from any other manufacturer.

Selected Validation Data



1X10⁶ human PBMCs were surface stained with 0.2 ug Anti-Human CD29 (65191-1-Ig, Clone:TS2/16) labeled with FlexAble CoraLite® Plus 750 Antibody Labeling Kit for Mouse IgG1 (KFA024) (red), or unstained (blue). Cells were not fixed. Monocytes were gated.



1X10⁶ human PBMCs were surface stained with 0.2 ug Anti-Human CD29 (65191-1-Ig, Clone:TS2/16) labeled with FlexAble CoraLite® Plus 750 Antibody Labeling Kit for Mouse IgG1 (KFA024) (right), or unstained (left). Cells were not fixed. Monocytes were gated.