

For Research Use Only

Anti-Human CD2 (TS1/8)

Catalog Number: 65192-1-Ig



Basic Information

Catalog Number:	GenBank Accession Number:	Purification Method:
65192-1-Ig	BC033583	Protein A purification
Size:	GeneID (NCBI):	CloneNo.:
100ug, 500 µg/ml	914	TS1/8
Source:	Full Name:	
Mouse	CD2 molecule	
Isotype:	Calculated MW:	
IgG1, kappa	351 aa, 39 kDa	

Applications

Tested Applications:
FC

Species Specificity:
Human

Background Information

CD2 is a cell surface glycoprotein present on a majority of thymocytes, all mature T cells and subset of NK cells but not on B lymphocytes. It is a pan T-cell marker. CD2 interacts with lymphocyte function-associated antigen (LFA-3/CD58) and CD48/BCM1 to mediate adhesion between T-cells and other cell types. CD2 is implicated in the triggering of T-cells, the cytoplasmic domain is implicated in the signaling function.

Storage

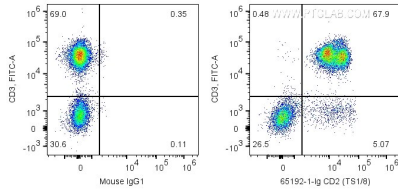
Storage:
Store at 2-8°C. Stable for one year after shipment.

Storage Buffer:
PBS with 0.09% sodium azide.

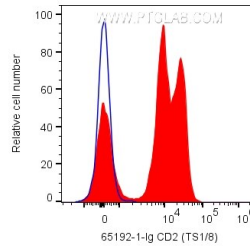
For technical support and original validation data for this product please contact:
T: 1 (888) 4PTGLAB (1-888-478-4522) (toll free in USA), or 1(312) 455-8498 (outside USA)
E: proteintech@ptglab.com
W: ptglab.com

This product is exclusively available under Proteintech Group brand and is not available to purchase from any other manufacturer.

Selected Validation Data



1X10⁶ human PBMCs were surface co-stained with FITC anti-Human CD3 and 0.2 ug Anti-Human CD2 (65192-1-Ig, Clone:TS1/8) labeled with FlexAble CoraLite® Plus 647 Antibody Labeling Kit for Mouse IgG1 (KFA023) or Mouse IgG1 Isotype Control. Cells were not fixed. Lymphocytes were gated.



1X10⁶ human PBMCs were surface stained with 0.2 ug Anti-Human CD2 (65192-1-Ig, Clone:TS1/8) labeled with FlexAble CoraLite® Plus 647 Antibody Labeling Kit for Mouse IgG1 (KFA023) or Mouse IgG1 Isotype Control. Cells were not fixed. Lymphocytes were gated.