

For Research Use Only

# Anti-Human CD11a (TS2/4)

Catalog Number: 65194-1-Ig



## Basic Information

<b>Catalog Number:</b> 65194-1-Ig	<b>GenBank Accession Number:</b> BC008777	<b>Purification Method:</b> Protein G purification
<b>Size:</b> 100ug , 500 µg/ml	<b>GeneID (NCBI):</b> 3683	<b>CloneNo.:</b> TS2/4
<b>Source:</b> Mouse	<b>Full Name:</b> integrin, alpha L (antigen CD11A (p180), lymphocyte function-associated antigen 1; alpha polypeptide)	
<b>Isotype:</b> IgG1, kappa	<b>Calculated MW:</b> 129 kDa	

## Applications

**Tested Applications:**  
FC

**Species Specificity:**  
Human

## Background Information

CD11a, also known as integrin αL or LFA-1α, is a 170-180 kDa transmembrane glycoprotein that forms a heterodimer with CD18 (PMID: 7027264; 1672643). CD11a/CD18 (LFA-1) is expressed by all leukocytes and mediates cell adhesion through interactions with its ligands, intercellular adhesion molecule 1 (ICAM-1), ICAM-2, and ICAM-3 (PMID: 7479767). CD11a/CD18 also functions in lymphocyte costimulatory signaling (PMID: 1972160).

## Storage

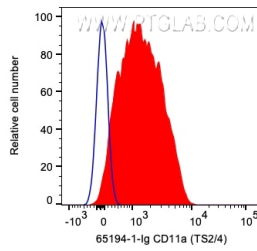
**Storage:**  
Store at 2-8°C. Stable for one year after shipment.

**Storage Buffer:**  
PBS with 0.09% sodium azide.

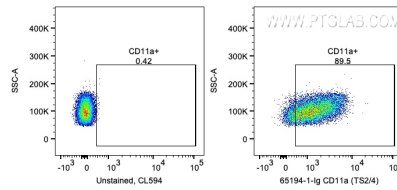
For technical support and original validation data for this product please contact:  
T: 1 (888) 4PTGLAB (1-888-478-4522) (toll free in USA), or 1(312) 455-8498 (outside USA)  
E: [proteintech@ptglab.com](mailto:proteintech@ptglab.com)  
W: [ptglab.com](http://ptglab.com)

This product is exclusively available under Proteintech Group brand and is not available to purchase from any other manufacturer.

## Selected Validation Data



1X10<sup>6</sup> human PBMCs were surface stained with 0.2 ug Anti-Human CD11a (65194-1-Ig, Clone:TS2/4) and CoraLite®594-Conjugated AffiniPure Goat Anti-Mouse IgG(H+L) at dilution 1:1000. Cells were not fixed. Lymphocytes were gated.



1X10<sup>6</sup> human PBMCs were surface stained with 0.2 ug Anti-Human CD11a (65194-1-Ig, Clone:TS2/4) and CoraLite®594-Conjugated AffiniPure Goat Anti-Mouse IgG(H+L) at dilution 1:1000. Cells were not fixed. Lymphocytes were gated.