

For Research Use Only

Anti-Human HLA-DR (L243)

Catalog Number: 65218-1-Ig



Basic Information

Catalog Number: 65218-1-Ig	GenBank Accession Number: BC032350	Purification Method: Protein A purification
Size: 100ug, 500 µg/ml	GeneID (NCBI): 3122	CloneNo.: L243
Source: Mouse	Full Name: major histocompatibility complex, class II, DR alpha	
Isotype: IgG2a, kappa	Calculated MW: 254 aa, 29 kDa	

Applications

Tested Applications:
FC

Species Specificity:
Human

Background Information

Storage

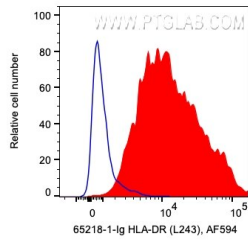
Storage:
Store at 2-8°C. Stable for one year after shipment.

Storage Buffer:
PBS with 0.09% sodium azide.

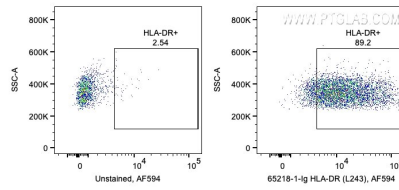
For technical support and original validation data for this product please contact:
T: 1 (888) 4PTGLAB (1-888-478-4522) (toll free in USA), or 1(312) 455-8498 (outside USA) E: proteintech@ptglab.com
W: ptglab.com

This product is exclusively available under Proteintech Group brand and is not available to purchase from any other manufacturer.

Selected Validation Data



1X10⁶ human PBMCs were surface stained with 0.2 ug Anti-Human HLA-DR (65218-1-Ig, Clone:L243) and CoraLite®594-Conjugated AffiniPure Goat Anti-Mouse IgG(H+L) at dilution 1:1000. Cells were not fixed. Monocytes were gated.



1X10⁶ human PBMCs were surface stained with 0.2 ug Anti-Human HLA-DR (65218-1-Ig, Clone:L243) and CoraLite®594-Conjugated AffiniPure Goat Anti-Mouse IgG(H+L) at dilution 1:1000. Cells were not fixed. Monocytes were gated.