

For Research Use Only

Anti-Human HLA-DR (L243), PBS Only

Catalog Number: 65218-1-PBS



Basic Information

Catalog Number:

65218-1-PBS

Size:

100ug, 1 mg/ml

Source:

Mouse

Isotype:

IgG2a, kappa

GenBank Accession Number:

BC032350

GeneID (NCBI):

3122

ENSEMBL Gene ID:

ENSG00000204287

UNIPROT ID:

P01903

Full Name:

major histocompatibility complex,
class II, DR alpha

Calculated MW:

254 aa, 29 kDa

Purification Method:

Protein A purification

CloneNo.:

L243

Applications

Tested Applications:

FC

Species Specificity:

human, monkey, non-human primates

Storage

Storage:

Store at -80°C.

Storage Buffer:

PBS Only, pH7.3

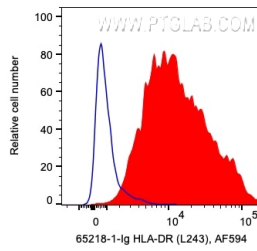
For technical support and original validation data for this product please contact:

T: 1 (888) 4PTGLAB (1-888-478-4522) (toll free
in USA), or 1(312) 455-8498 (outside USA)

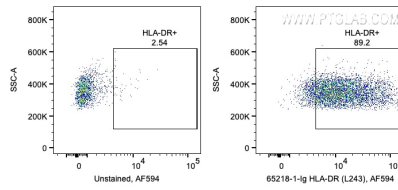
E: proteintech@ptglab.com
W: ptglab.com

This product is exclusively available under Proteintech Group brand and is not available to purchase from any other manufacturer.

Selected Validation Data



1X10⁶ human PBMCs were surface stained with 0.2 ug Anti-Human HLA-DR (65218-1-Ig, Clone:L243) and CoraLite®594-Conjugated AffiniPure Goat Anti-Mouse IgG(H+L) at dilution 1:1000. Cells were not fixed. Monocytes were gated. This data was developed using the same antibody clone with 65218-1-PBS in a different storage buffer formulation.



1X10⁶ human PBMCs were surface stained with 0.2 ug Anti-Human HLA-DR (65218-1-Ig, Clone:L243) and CoraLite®594-Conjugated AffiniPure Goat Anti-Mouse IgG(H+L) at dilution 1:1000. Cells were not fixed. Monocytes were gated. This data was developed using the same antibody clone with 65218-1-PBS in a different storage buffer formulation.