

For Research Use Only

Anti-Human CD85j / LILRB1 (GHI/75)

Catalog Number: 65238-1-Ig



Basic Information

Catalog Number:

65238-1-Ig

Size:

100ug, 0.5 mg/mL

Source:

Mouse

Isotype:

IgG2b, kappa

GenBank Accession Number:

BC015731

GeneID (NCBI):

10859

UNIPROT ID:

Q8NHL6

Full Name:

leukocyte immunoglobulin-like receptor, subfamily B (with TM and ITIM domains), member 1

Calculated MW:

71 kDa

Purification Method:

Affinity purification

CloneNo.:

GHI/75

Applications

Tested Applications:

FC

Species Specificity:

human

Background Information

LILRB1, also named as CD85j or ILT2, includes four C2 Ig domains binding HLA class I molecules in the extracellular region and a cytoplasmic domain containing four immunoreceptor tyrosine-based inhibition motifs (ITIM). LILRB1 is a surface glycoprotein detected on the surface of B cells, monocytes, dendritic cells, T cells and NK cells.

Storage

Storage:

Store at 2-8°C. Stable for one year after shipment.

Storage Buffer:

PBS with 0.09% sodium azide.

For technical support and original validation data for this product please contact:

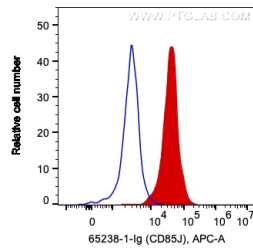
T: 1 (888) 4PTGLAB (1-888-478-4522) (toll free in USA), or 1(312) 455-8498 (outside USA)

E: proteintech@ptglab.com

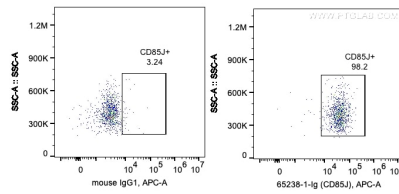
W: ptglab.com

This product is exclusively available under Proteintech Group brand and is not available to purchase from any other manufacturer.

Selected Validation Data



1X10⁶ PBMC were surface stained with 0.2 ug Anti-Human IL1RB1 (65238-1-Ig, Clone: GHI/75) and APC-Donkey anti-Mouse IgG at dilution 1:1000 (red), or 0.2 ug Mouse IgG1 Isotype Control (66360-1-Ig, Clone: T1F8D3F10) (blue). Monocytes are gated. Cells were not fixed.



1X10⁶ PBMC were surface stained with 0.2 ug Anti-Human IL1RB1 (65238-1-Ig, Clone: GHI/75) and APC-Donkey anti-Mouse IgG at dilution 1:1000, or 0.2 ug Mouse IgG1 Isotype Control (66360-1-Ig, Clone: T1F8D3F10). Monocytes are gated. Cells were not fixed.