

For Research Use Only

Anti-Human CD64 (10.1), PBS Only

Catalog Number: 65253-1-PBS



Basic Information

Catalog Number:

65253-1-PBS

Size:

100ug, 1 mg/ml

Source:

Mouse

Isotype:

IgG1, kappa

GenBank Accession Number:

BC032634

GeneID (NCBI):

2209

ENSEMBL Gene ID:

ENSG00000150337

UNIPROT ID:

P12314

Full Name:

Fc fragment of IgG, high affinity Ia, receptor (CD64)

Calculated MW:

374 aa, 43 kDa

Purification Method:

Protein G purification

CloneNo.:

10.1

Applications

Tested Applications:

FC

Species Specificity:

human, monkey, non-human primates

Background Information

Fcγ receptor comprise a multigene family of integral membrane glycoproteins that exhibit complex activation or inhibitory effects on cell functions after aggregation by complexed immunoglobulin G (IgG) (PMID: 17005690). CD64, also known as Fcγ R1A, is a high-affinity receptor for the Fc region of IgG. It is expressed by monocytes/macrophages, activated neutrophils, dendritic cells, and early myeloid cells (PMID: 23293080; 19642859; 7680917). CD64 functions in both innate and adaptive immune responses.

Storage

Storage:

Store at -80°C.

Storage Buffer:

PBS Only, pH7.3

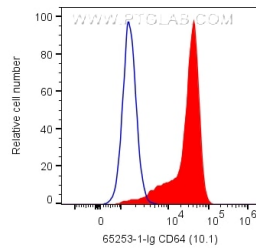
For technical support and original validation data for this product please contact:

T: 1 (888) 4PTGLAB (1-888-478-4522) (toll free in USA), or 1(312) 455-8498 (outside USA)

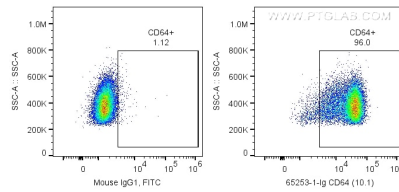
E: proteintech@ptglab.com
W: ptglab.com

This product is exclusively available under Proteintech Group brand and is not available to purchase from any other manufacturer.

Selected Validation Data



1X10⁶ human PBMCs were surface stained with 0.2 ug Anti-Human CD64 (65253-1-Ig, Clone:10.1) and CoraLite®488-Conjugated AffiniPure Goat Anti-Mouse IgG(H+L) at dilution 1:1000 (red), or CoraLite®488-Conjugated Mouse IgG1 Isotype Control. Cells were not fixed. Monocytes were gated. This data was developed using the same antibody clone with 65253-1-PBS in a different storage buffer formulation.



1X10⁶ human PBMCs were surface stained with 0.2 ug Anti-Human CD64 (65253-1-Ig, Clone:10.1) and CoraLite®488-Conjugated AffiniPure Goat Anti-Mouse IgG(H+L) at dilution 1:1000, or CoraLite®488-Conjugated Mouse IgG1 Isotype Control. Cells were not fixed. Monocytes were gated. This data was developed using the same antibody clone with 65253-1-PBS in a different storage buffer formulation.