

For Research Use Only

Anti-Human CD31 (WM-59)

Catalog Number: 65268-1-Ig



Basic Information

Catalog Number:

65268-1-Ig

Size:

100ug, 0.5 mg/ml

Source:

Mouse

Isotype:

IgG1, kappa

GenBank Accession Number:

BC022512

GeneID (NCBI):

5175

ENSEMBL Gene ID:

ENSG00000261371

Full Name:

platelet/endothelial cell adhesion molecule

Calculated MW:

83 kDa

Purification Method:

Affinity purification

CloneNo.:

WM-59

Recommended Dilutions:

IF/ICC 1:500-1:2000

Applications

Tested Applications:

IF/ICC, FC

Species Specificity:

human

Positive Controls:

IF/ICC : HUVEC cells,

Background Information

CD31, also known as PECAM1 (Platelet endothelial cell adhesion molecule), is a member of the immunoglobulin gene superfamily of cell adhesion molecules. CD31 is a transmembrane glycoprotein that is highly expressed on the surface of the endothelium, making up a large portion of its intracellular junctions. It is also present on the surface of hematopoietic cells and immune cells including platelets, monocytes, neutrophils, natural killer cells, megakaryocytes and some types of T-cell (PMID: 9011572). As well as its role in cell-cell adhesion, CD31 functions as a signaling receptor, and is involved in important physiological events such as nitric oxide production, regulation of T-cell immunity and tolerance, leukocyte transendothelial migration and inflammation and angiogenesis (PMID: 21183735; 20978210; 17872453; 20634489).

Storage

Storage:

Store at 2-8°C. Stable for one year after shipment.

Storage Buffer:

PBS with 0.09% sodium azide.

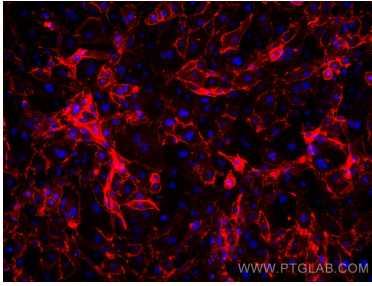
For technical support and original validation data for this product please contact:

T: 1 (888) 4PTGLAB (1-888-478-4522) (toll free in USA), or 1(312) 455-8498 (outside USA)

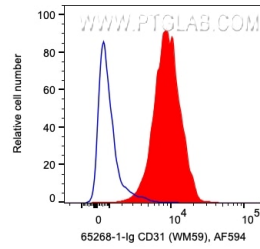
E: proteintech@ptglab.com
W: ptglab.com

This product is exclusively available under Proteintech Group brand and is not available to purchase from any other manufacturer.

Selected Validation Data



Immunofluorescent analysis of (4% PFA) fixed HUVEC cells using CD31 antibody (65268-1-Ig, Clone: WM-59) at dilution of 1:1000 and Multi-rAb CoraLite® Plus 594-Goat Anti-Mouse Recombinant Secondary Antibody (H+L) (RGAM004).



1X10⁶ human PBMCs were surface stained with 0.2 ug Anti-Human CD31 (65268-1-Ig, Clone:WM-59) and CoraLite® 594-Conjugated AffiniPure Goat Anti-Mouse IgG(H+L) at dilution 1:1000 or unstained. Cells were not fixed. Monocytes were gated.