

For Research Use Only

Anti-Human CD33 (WM53)

Catalog Number: 65272-1-Ig



Basic Information

Catalog Number:

65272-1-Ig

Size:

100ug, 0.5 mg/mL

Source:

Mouse

Isotype:

IgG1, kappa

GenBank Accession Number:

BC028152

GeneID (NCBI):

945

Full Name:

CD33 molecule

Calculated MW:

364 aa, 40 kDa

Purification Method:

Affinity purification

CloneNo.:

WM53

Applications

Tested Applications:

FC

Species Specificity:

Human

Background Information

CD33, also referred to as Siglec-3, is a 67-kDa glycosylated transmembrane protein of sialic acid-binding immunoglobulin-like lectin (siglec) family. CD33 is expressed on monocytes, myeloid progenitors, granulocytes, mast cells, some T cells. It may mediate cell-to-cell adhesion and act as a receptor that inhibits the proliferation of normal and leukemic myeloid cells.

Storage

Storage:

Store at 2-8°C. Stable for one year after shipment.

Storage Buffer:

PBS with 0.09% sodium azide.

For technical support and original validation data for this product please contact:

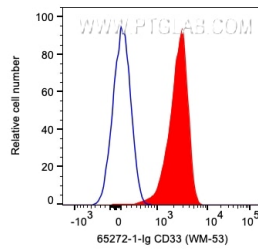
T: 1 (888) 4PTGLAB (1-888-478-4522) (toll free in USA), or 1(312) 455-8498 (outside USA)

E: proteintech@ptglab.com

W: ptglab.com

This product is exclusively available under Proteintech Group brand and is not available to purchase from any other manufacturer.

Selected Validation Data



1X10⁶ human PBMCs were surface stained with 0.2 ug Anti-Human CD33 (65272-1-Ig, Clone:WM-53) and CoraLite®594-Conjugated AffiniPure Goat Anti-Mouse IgG(H+L) at dilution 1:1000. Cells were not fixed.