

For Research Use Only

# Anti-Human IL-1 beta (2A7C6), PBS Only (Detector)

Catalog Number: 65276-1-PBS



## Basic Information

Catalog Number: 65276-1-PBS	GenBank Accession Number: BC008678	Purification Method: Affinity purification
Size: 100ug , 2 mg/ml	GeneID (NCBI): 3553	CloneNo.: 2A7C6
Source: Mouse	ENSEMBL Gene ID: ENSG00000125538	
Isotype: IgG1	Full Name: interleukin 1, beta	
Immunogen Catalog Number: HZ-1164	Calculated MW: 269 aa, 31 kDa	

## Applications

**Tested Applications:**  
FC (Intra), Cytometric bead array, Indirect ELISA

**Species Specificity:**  
human

## Product Information

65276-1-PBS targets IL-1 beta as part of a matched antibody pair:

MP80001-1: 82696-6-PBS capture and 65276-1-PBS detection (validated in Cytometric bead array)

MP80001-5: 82696-3-PBS capture and 65276-1-PBS detection (validated in Cytometric bead array)

Unconjugated mouse monoclonal antibody pair in PBS only (BSA and azide free) storage buffer at a concentration of 1 mg/mL, ready for conjugation.

This conjugation ready format makes antibodies ideal for use in many applications including: ELISAs, multiplex assays requiring matched pairs, mass cytometry, and multiplex imaging applications. Antibody use should be optimized by the end user for each application and assay.

## Background Information

Interleukin-1 is a pro-inflammatory cytokine with multiple biological effects. The IL-1 gene family encodes three proteins: IL-1 $\alpha$ , IL-1 $\beta$  and their naturally occurring inhibitor IL-1RN. Interleukin 1 $\beta$  (IL-1 $\beta$ ), mainly produced by blood monocytes and tissue macrophages, has been implicated in mediating both acute and chronic inflammation. IL-1 $\beta$  is known to be involved in a variety of cellular activities, including cell proliferation, differentiation and apoptosis. IL-1 $\beta$  is emerging as a key mediator of carcinogenesis that characterizes host-environment interactions. (PMID: 8630372; 12401481; 23704929; 24618930)

## Storage

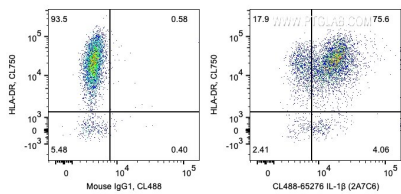
**Storage:**  
Store at -80°C.

**Storage Buffer:**  
PBS Only

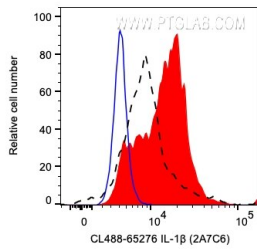
For technical support and original validation data for this product please contact:  
T: 1 (888) 4PTGLAB (1-888-478-4522) (toll free in USA), or 1(312) 455-8498 (outside USA)  
E: [proteintech@ptglab.com](mailto:proteintech@ptglab.com)  
W: [ptglab.com](http://ptglab.com)

This product is exclusively available under Proteintech Group brand and is not available to purchase from any other manufacturer.

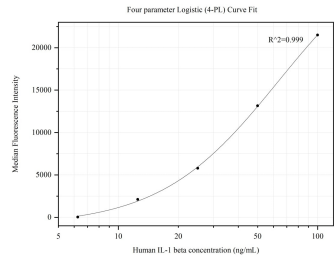
Selected Validation Data



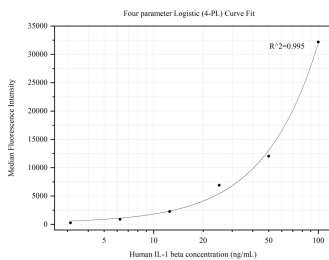
1X10<sup>6</sup> LPS and Brefeldin A treated human PBMCs were surface stained with Anti-Human HLA-DR then intracellularly stained with 0.2 ug CoraLite® Plus 488 Anti-Human IL-1β (CL488-65276, Clone:2A7C6) or Mouse IgG1 Isotype Control. Cells were fixed and permeabilized with Transcription Factor Staining Buffer Kit (PF00011). Monocytes were gated. This data was developed using the CoraLite® Plus 488 conjugated antibody of 65276-1-Ig. This data was developed



1X10<sup>6</sup> LPS and Brefeldin A treated human PBMCs were intracellularly stained with 0.2 ug CoraLite® Plus 488 Anti-Human IL-1β (CL488-65276, Clone:2A7C6) (red) or Mouse IgG1 Isotype Control (blue), or unactivated and Brefeldin A treated human PBMCs were intracellularly stained with 0.2 ug CoraLite® Plus 488 Anti-Human IL-1β (CL488-65276, Clone:2A7C6) (black, dashed line). Cells were fixed and permeabilized with Transcription Factor Staining Buffer Kit



Cytometric bead array standard curve of MP80001-1, IL-1 beta Hybrid Matched Antibody Pair, PBS Only. Capture antibody: 82696-6-PBS. Detection antibody: 65276-1-PBS. Standard:HZ-1164. Range: 6.25-100 ng/mL



Cytometric bead array standard curve of MP80001-5, IL-1 beta Hybrid Matched Antibody Pair, PBS Only. Capture antibody: 82696-3-RR. Detection antibody: 65276-1-PBS. Standard:HZ-1164. Range: 3.125-100 ng/mL