

For Research Use Only

Anti-Human IL-12 (1E12H6), PBS Only

Catalog Number: 65277-1-PBS



Basic Information

Catalog Number:

65277-1-PBS

Size:

100ug,

Source:

Mouse

Isotype:

IgG1

Immunogen Catalog Number:

HZ-1256

GenBank Accession Number:

BC104982

GeneID (NCBI):

3592

Full Name:

interleukin 12A (natural killer cell
stimulatory factor 1, cytotoxic
lymphocyte maturation factor 1, p35)

Calculated MW:

25 kDa

Purification Method:

Affinity purification

CloneNo.:

1E12H6

Applications

Tested Applications:

FC (Intra)

Species Specificity:

human

Background Information

IL-12 is a heterodimeric cytokine composed of two glycosylated and disulfide-linked subunits (p40 cysteine-linked to p35). IL-12 is a potent regulator of cell mediated immune responses and it induces IFN-gamma production by NK and T cells. It is produced by activated monocytes/macrophage cells, B lymphocytes, and connective tissue type mast cells (PMID: 24821971; 7612223).

Storage

Storage:

-20°C.

Storage Buffer:

PBS Only

Aliquoting is unnecessary for -20°C storage

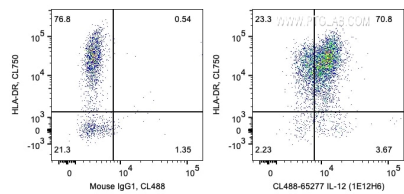
For technical support and original validation data for this product please contact:

T: 1 (888) 4PTGLAB (1-888-478-4522) (toll free
in USA), or 1(312) 455-8498 (outside USA)

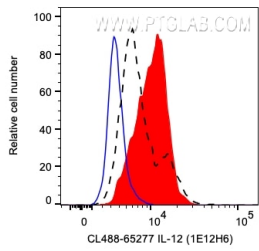
E: proteintech@ptglab.com
W: ptglab.com

This product is exclusively available under Proteintech Group brand and is not available to purchase from any other manufacturer.

Selected Validation Data



1X10⁶ LPS and Brefeldin A treated human PBMCs were surface stained with CoraLite® Plus 750 Anti-Human HLA-DR then intracellularly stained with 0.2 ug CoraLite® Plus 488 Anti-Human IL-12 (CL488-65277, Clone:1E12H6) or Mouse IgG1 Isotype Control. Cells were fixed and permeabilized with Transcription Factor Staining Buffer Kit (PF00011). Monocytes were gated. This data was developed using the CoraLite® Plus 488 conjugated antibody of 65277-1-Ig. This



1X10⁶ LPS and Brefeldin A treated human PBMCs were intracellularly stained with 0.2 ug CoraLite® Plus 488 Anti-Human IL-12 (CL488-65277, Clone:1E12H6) (red) or Mouse IgG1 Isotype Control (blue), or unstimulated and Brefeldin A treated human PBMCs were intracellularly stained with 0.2 ug CoraLite® Plus 488 Anti-Human IL-12 (CL488-65277, Clone:1E12H6) (black, dashed line). Cells were fixed and permeabilized with Transcription Factor Staining Buffer Kit

