

For Research Use Only

Anti-Human CD163 (GHI/61) Rabbit Recombinant Antibody, PBS only



Catalog Number: 65501-1-PBS

Basic Information

Catalog Number:

65501-1-PBS

Size:

1mg, 1 mg/ml

Source:

Rabbit

Isotype:

IgG

GenBank Accession Number:

BC051281

GeneID (NCBI):

9332

ENSEMBL Gene ID:

ENSG00000177575

Full Name:

CD163 molecule

Calculated MW:

1156 aa, 125 kDa

Purification Method:

Affinity purification

CloneNo.:

GHI/61

Applications

Tested Applications:

FC

Species Specificity:

Human

Background Information

CD163, also known as M130, is a membrane glycoprotein that belongs to the scavenger receptor superfamily (PMID: 8370408). It is an acute phase-regulated and signal-inducing macrophage protein expressed exclusively in monocytes and tissue macrophages (PMID: 11196644). CD163 mediates endocytosis of haptoglobin-haemoglobin complexes (PMID: 11196644). The uptake of haptoglobin by macrophages contributes to the recycling of iron and also to the inflammatory response (PMID: 22900885). Soluble CD163 (sCD163), as a result of ectodomain shedding during inflammatory activation of macrophages, circulates in blood and has been suggested as a plasma/serum marker for macrophage activity (PMID: 12570164).

Storage

Storage:

Store at -80°C. Stable for one year after shipment.

Storage Buffer:

PBS only

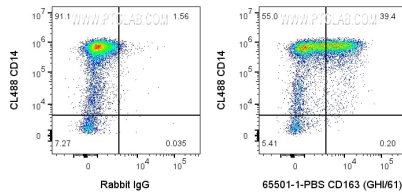
For technical support and original validation data for this product please contact:

T: 1 (888) 4PTGLAB (1-888-478-4522) (toll free in USA), or 1(312) 455-8498 (outside USA)

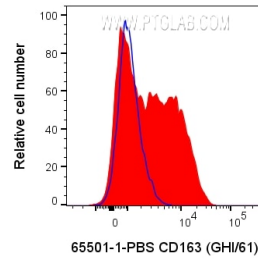
E: proteintech@ptglab.com
W: ptglab.com

This product is exclusively available under Proteintech Group brand and is not available to purchase from any other manufacturer.

Selected Validation Data



1X10⁶ human PBMCs were surface stained with 0.2 ug Anti-Human CD163 Rabbit Recombinant Antibody (65501-1-PBS, Clone:GHI/61) or Rabbit IgG control PolyAb and CoraLite®647-Conjugated AffiniPure Goat Anti-Rabbit IgG(H+L) at dilution 1:1000. Cells were then stained with CL488-Conjugated CD14. Cells were incubated with FC Receptor Block prior to staining. Cells were not fixed. Monocytes were gated.



1X10⁶ human PBMCs were surface stained with 0.2 ug Anti-Human CD163 Rabbit Recombinant Antibody (65501-1-PBS, Clone:GHI/61) or Rabbit IgG control PolyAb and CoraLite®647-Conjugated AffiniPure Goat Anti-Rabbit IgG(H+L) at dilution 1:1000. Cells were incubated with FC Receptor Block prior to staining. Cells were not fixed. Monocytes were gated.