

For Research Use Only

# Anti-Human CD4 (OKT4) Rabbit IgG Recombinant Antibody, PBS Only

Catalog Number: 65505-1-PBS



## Basic Information

Catalog Number:

65505-1-PBS

Size:

1mg, 2 mg/ml

Source:

Rabbit

Isotype:

IgG

GenBank Accession Number:

BC025782

GeneID (NCBI):

920

ENSEMBL Gene ID:

ENSG00000010610

Full Name:

CD4 molecule

Calculated MW:

55 kDa

Purification Method:

Affinity purification

CloneNo.:

OKT4

## Applications

Tested Applications:

FC

Species Specificity:

human

## Background Information

CD4 is a 55-kDa transmembrane glycoprotein expressed on T helper cells, majority of thymocytes, monocytes, macrophages, and dendritic cells (PMID: 9304802; 12213222). CD4 is an accessory protein for MHC class-II antigen/T-cell receptor interaction. It plays an important role in T helper cell development and activation (PMID: 9539765; 3112582). CD4 serves as a receptor for the human immunodeficiency virus (HIV) (PMID: 9304802).

## Storage

Storage:

Store at -80°C. Stable for one year after shipment.

Storage Buffer:

PBS only

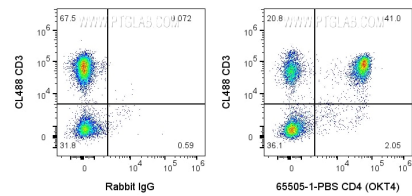
For technical support and original validation data for this product please contact:

T: 1 (888) 4PTGLAB (1-888-478-4522) (toll free  
in USA), or 1(312) 455-8498 (outside USA)

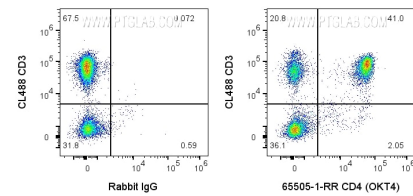
E: [proteintech@ptglab.com](mailto:proteintech@ptglab.com)  
W: [ptglab.com](http://ptglab.com)

This product is exclusively available under Proteintech Group brand and is not available to purchase from any other manufacturer.

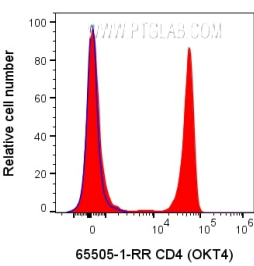
Selected Validation Data



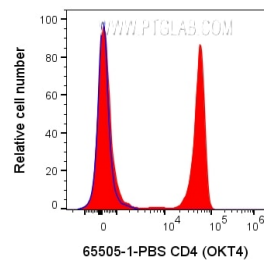
1X10<sup>6</sup> human PBMCs were surface stained with 0.1 ug Anti-Human CD4 Rabbit Recombinant Antibody (65505-1-PBS, Clone:OKT4) or Rabbit IgG control PolyAb, and CoraLite®647-Conjugated AffiniPure Goat Anti-Rabbit IgG(H+L) at dilution 1:1000. Cells were then stained with CL488 Anti-Human CD3. Cells were not fixed. Lymphocytes were gated.



1X10<sup>6</sup> human PBMCs were surface stained with 0.1 ug Anti-Human CD4 Rabbit Recombinant Antibody (65505-1-RR, Clone:OKT4) or Rabbit IgG control PolyAb, and CoraLite®647-Conjugated AffiniPure Goat Anti-Rabbit IgG(H+L) at dilution 1:1000. Cells were then stained with CL488 Anti-Human CD3. Cells were not fixed. Lymphocytes were gated. This data was developed using the same antibody clone with 65505-1-PBS in a different storage



1X10<sup>6</sup> human PBMCs were surface stained with 0.1 ug Anti-Human CD4 Rabbit Recombinant Antibody (65505-1-RR, Clone:OKT4) or Rabbit IgG control PolyAb, and CoraLite®647-Conjugated AffiniPure Goat Anti-Rabbit IgG(H+L) at dilution 1:1000. Cells were not fixed. Lymphocytes were gated. This data was developed using the same antibody clone with 65505-1-PBS in a different storage buffer formulation.



1X10<sup>6</sup> human PBMCs were surface stained with 0.1 ug Anti-Human CD4 Rabbit Recombinant Antibody (65505-1-PBS, Clone:OKT4) or Rabbit IgG control PolyAb, and CoraLite®647-Conjugated AffiniPure Goat Anti-Rabbit IgG(H+L) at dilution 1:1000. Cells were not fixed. Lymphocytes were gated.