

For Research Use Only



Anti-Human CD21 (BU32) Mouse IgG1 Recombinant Antibody, PBS Only

Catalog Number: **65512-1-PBS**

Basic Information

Catalog Number:	GenBank Accession Number:	Purification Method:
65512-1-PBS	BC136394	Affinity purification
Size:	GeneID (NCBI):	CloneNo.:
1mg, 1 mg/ml	1380	BU32
Source:	ENSEMBL Gene ID:	
Mouse	ENSG00000117322	
Isotype:	UNIPROT ID:	
IgG1	P20023	
	Full Name:	
	complement component (3d/Epstein Barr virus) receptor 2	
	Calculated MW:	
	1092 aa, 119 kDa	

Applications

Tested Applications:
FC
Species Specificity:
Human

Background Information

CD21, also known as complement receptor type 2 (CR2), complement C3d receptor, and Epstein-Barr virus receptor, is a transmembrane protein that contains a small cytoplasmic domain, a transmembrane region and an extracellular domain consisting of 15 tandem short consensus repeat sequences (PMID: 6230668; 2551147). It is expressed on B cells, follicular dendritic cells, thymocytes and a subset of peripheral T cells (PMID: 26119182). CD21 binds complement fragments C3d, C3dg and iC3b and acts as a receptor for the Epstein-Barr virus (PMID: 7753047). On B cells, together with CD19 and CD81, CD21 forms a complex that functions as a co-receptor to the BCR (PMID: 7542009). It is involved in B cells activation and functions.

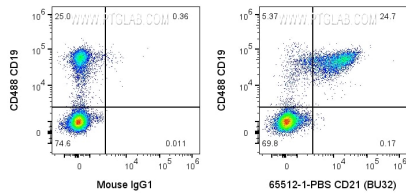
Storage

Storage:
Store at -80°C. Stable for one year after shipment.
Storage Buffer:
PBS only

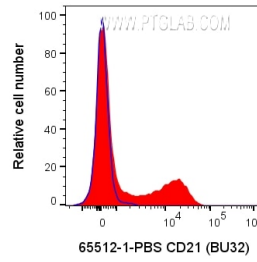
For technical support and original validation data for this product please contact:
T: 1 (888) 4PTGLAB (1-888-478-4522) (toll free in USA), or 1(312) 455-8498 (outside USA)
E: proteintech@ptglab.com
W: ptglab.com

This product is exclusively available under Proteintech Group brand and is not available to purchase from any other manufacturer.

Selected Validation Data



1x10⁶ human PBMCs were surface stained with 0.1 ug Anti-Human CD21 Mouse Recombinant Antibody (65512-1-PBS, Clone:BU32) or Mouse IgG1 Isotype Control and CoraLite®647-Conjugated AffiniPure Donkey Anti-Mouse IgG(H+L) at dilution 1:1000. Cells were then stained with CL488-Conjugated Anti-Human CD3. Cells were not fixed. Lymphocytes were gated.



1x10⁶ human PBMCs were surface stained with 0.1 ug Anti-Human CD21 Mouse Recombinant Antibody (65512-1-PBS, Clone:BU32) or Mouse IgG1 Isotype Control and CoraLite®647-Conjugated AffiniPure Donkey Anti-Mouse IgG(H+L) at dilution 1:1000. Cells were not fixed. Lymphocytes were gated.