

For Research Use Only

# Anti-Human CD68 (KP1) Rabbit Recombinant Antibody, PBS only



Catalog Number: 65515-1-PBS

## Basic Information

Catalog Number:

65515-1-PBS

Size:

100ug, 1 mg/ml

Source:

Rabbit

Isotype:

IgG

GenBank Accession Number:

BC015557

GeneID (NCBI):

968

UNIPROT ID:

P34810

Full Name:

CD68 molecule

Calculated MW:

37 kDa

Purification Method:

Affinity purification

CloneNo.:

KP1

## Applications

Tested Applications:

FC

Species Specificity:

Human

## Background Information

CD68 is a type I transmembrane glycoprotein that is highly expressed by human monocytes and tissue macrophages. It belongs to the lysosomal/endosomal-associated membrane glycoprotein (LAMP) family and primarily localizes to lysosomes and endosomes with a smaller fraction circulating to the cell surface. CD68 is also a member of the scavenger receptor family. It may play a role in phagocytic activities of tissue macrophages.

## Storage

Storage:

Store at -80°C. Stable for one year after shipment.

Storage Buffer:

PBS only

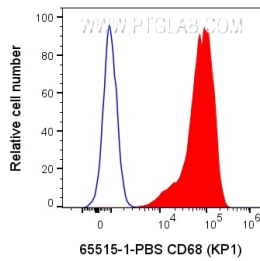
For technical support and original validation data for this product please contact:

T: 1 (888) 4PTGLAB (1-888-478-4522) (toll free in USA), or 1(312) 455-8498 (outside USA)

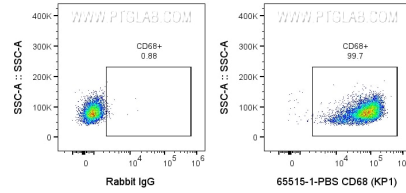
E: [proteintech@ptglab.com](mailto:proteintech@ptglab.com)  
W: [ptglab.com](http://ptglab.com)

This product is exclusively available under Proteintech Group brand and is not available to purchase from any other manufacturer.

## Selected Validation Data



1x10<sup>6</sup> human PBMCs were intracellularly stained with 0.1 ug Anti-Human CD68 Rabbit Recombinant Antibody (65515-1-PBS, Clone:KP1) or Rabbit IgG control Rabbit PolyAb and CoraLite®647-Conjugated AffiniPure Goat Anti-Rabbit IgG(H+L) at dilution 1:1000. Cells were fixed and permeabilized with Transcription Factor Staining Buffer Kit (PF00011) and treated with FC Receptor Block prior to staining. Monocytes were gated.



1x10<sup>6</sup> human PBMCs were intracellularly stained with 0.1 ug Anti-Human CD68 Rabbit Recombinant Antibody (65515-1-PBS, Clone:KP1) or Rabbit IgG control Rabbit PolyAb and CoraLite®647-Conjugated AffiniPure Goat Anti-Rabbit IgG(H+L) at dilution 1:1000. Cells were fixed and permeabilized with Transcription Factor Staining Buffer Kit (PF00011) and treated with FC Receptor Block prior to staining. Monocytes were gated.