

For Research Use Only

# Anti-Human CD68 (KP1) Rabbit Recombinant Antibody



Catalog Number: 65515-1-RR

## Basic Information

<b>Catalog Number:</b> 65515-1-RR	<b>GenBank Accession Number:</b> BC015557	<b>Purification Method:</b> Affinity purification
<b>Size:</b> 100ug, 0.5 mg/ml	<b>GeneID (NCBI):</b> 968	<b>CloneNo.:</b> KP1
<b>Source:</b> Rabbit	<b>Full Name:</b> CD68 molecule	
<b>Isotype:</b> IgG	<b>Calculated MW:</b> 37 kDa	

## Applications

**Tested Applications:**  
FC

**Species Specificity:**  
Human

## Background Information

CD68 is a type I transmembrane glycoprotein that is highly expressed by human monocytes and tissue macrophages. It belongs to the lysosomal/endosomal-associated membrane glycoprotein (LAMP) family and primarily localizes to lysosomes and endosomes with a smaller fraction circulating to the cell surface. CD68 is also a member of the scavenger receptor family. It may play a role in phagocytic activities of tissue macrophages.

## Storage

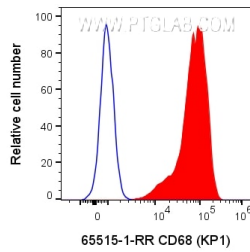
**Storage:**  
Store at 2-8°C. Stable for one year after shipment.

**Storage Buffer:**  
PBS with 0.09% sodium azide.

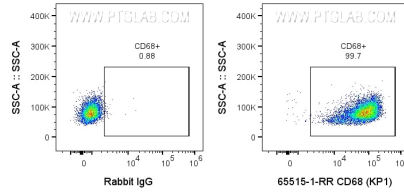
For technical support and original validation data for this product please contact:  
T: 1 (888) 4PTGLAB (1-888-478-4522) (toll free in USA), or 1(312) 455-8498 (outside USA)      E: [proteintech@ptglab.com](mailto:proteintech@ptglab.com)  
W: [ptglab.com](http://ptglab.com)

This product is exclusively available under Proteintech Group brand and is not available to purchase from any other manufacturer.

## Selected Validation Data



1x10<sup>6</sup> human PBMCs were intracellularly stained with 0.1 ug Anti-Human CD68 Rabbit Recombinant Antibody (65515-1-RR, Clone:KP1) or Rabbit IgG control Rabbit PolyAb and CoraLite®647-Conjugated AffiniPure Goat Anti-Rabbit IgG(H+L) at dilution 1:1000. Cells were fixed and permeabilized with Transcription Factor Staining Buffer Kit (PF00011) and treated with FC Receptor Block prior to staining. Monocytes



1x10<sup>6</sup> human PBMCs were intracellularly stained with 0.1 ug Anti-Human CD68 Rabbit Recombinant Antibody (65515-1-RR, Clone:KP1) or Rabbit IgG control Rabbit PolyAb and CoraLite®647-Conjugated AffiniPure Goat Anti-Rabbit IgG(H+L) at dilution 1:1000. Cells were fixed and permeabilized with Transcription Factor Staining Buffer Kit (PF00011) and treated with FC Receptor Block prior to staining. Monocytes