

For Research Use Only



Anti-Human CD58 (TS2/9) Mouse IgG1 Recombinant Antibody, PBS Only

Catalog Number: **65517-1-PBS**

Basic Information

Catalog Number: 65517-1-PBS	GenBank Accession Number: BC005930	Purification Method: Affinity purification
Size: 1mg, 1 mg/ml	GeneID (NCBI): 965	CloneNo.: TS2/9
Source: Mouse	Full Name: CD58 molecule	
Isotype: IgG1	Calculated MW: 28 kDa	

Applications

Tested Applications:
FC
Species Specificity:
Human

Background Information

CD58, also known as lymphocyte function-associated antigen 3 (LFA-3), is a heavily glycosylated protein of 55-70 kDa that is expressed on a broad range of hematopoietic and non-hematopoietic cells. CD58 is involved in immune recognition of tumor cells via binding of the CD2 receptor expressed on cytotoxic T cells.

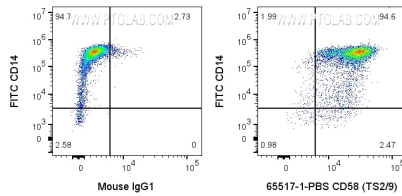
Storage

Storage:
Store at -80°C. Stable for one year after shipment.
Storage Buffer:
PBS only

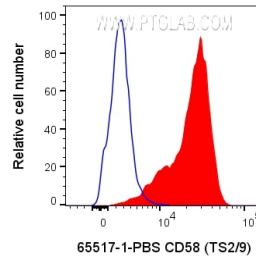
For technical support and original validation data for this product please contact:
T: 1 (888) 4PTGLAB (1-888-478-4522) (toll free in USA), or 1(312) 455-8498 (outside USA)
E: proteintech@ptglab.com
W: ptglab.com

This product is exclusively available under Proteintech Group brand and is not available to purchase from any other manufacturer.

Selected Validation Data



1x10⁶ human PBMCs were surface stained with 0.1 ug Anti-Human CD58 Mouse Recombinant Antibody (65517-1-PBS, Clone:TS2/9) or Mouse IgG1 Isotype Control, and CoraLite®647-Conjugated AffiniPure Donkey Anti-Mouse IgG(H+L) at dilution 1:1000. Cells were then stained with FITC-conjugated Anti-Human CD14. Cells were not fixed. Cells were treated with FC Receptor Block prior to staining. Monocytes were gated.



1x10⁶ human PBMCs were surface stained with 0.1 ug Anti-Human CD58 Mouse Recombinant Antibody (65517-1-PBS, Clone:TS2/9) or Mouse IgG1 Isotype Control, and CoraLite®647-Conjugated AffiniPure Donkey Anti-Mouse IgG(H+L) at dilution 1:1000. Cells were not fixed. Cells were treated with FC Receptor Block prior to staining. Monocytes were gated.