

For Research Use Only



# Anti-Human CD5 (L17F12) Mouse IgG1 Recombinant Antibody

Catalog Number: 65530-1-MR

## Basic Information

Catalog Number:	GenBank Accession Number:	Purification Method:
65530-1-MR	BC027901	Affinity purification
Size:	GeneID (NCBI):	CloneNo.:
100ug, 0.5 mg/ml	921	L17F12
Source:	ENSEMBL Gene ID:	
Mouse	ENSG00000110448	
Isotype:	Full Name:	
IgG1	CD5 molecule	
	Calculated MW:	
	495 aa, 55 kDa	

## Applications

Tested Applications:  
FC  
Species Specificity:  
Human

## Background Information

CD5 is a type I transmembrane glycoprotein of the scavenger receptor cysteine-rich family (PMID: 12403363). CD5 is expressed on a majority of thymocytes, mature T cells, B cell subsets, and peripheral blood dendritic cells (PMID: 9858516; 6156984; 10379049; 1384337). CD5 may act as a receptor in regulating T-cell proliferation. It functions as a negative regulator of TCR signaling during thymocyte development (PMID: 7542801).

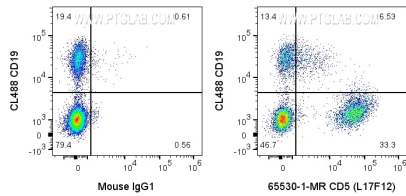
## Storage

Storage:  
Store at 2-8°C. Stable for one year after shipment.  
Storage Buffer:  
PBS with 0.09% sodium azide.

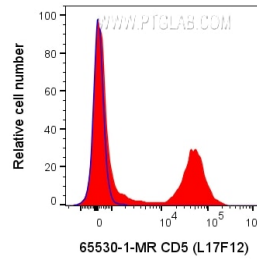
For technical support and original validation data for this product please contact:  
T: 1 (888) 4PTGLAB (1-888-478-4522) (toll free in USA), or 1(312) 455-8498 (outside USA)  
E: [proteintech@ptglab.com](mailto:proteintech@ptglab.com)  
W: [ptglab.com](http://ptglab.com)

This product is exclusively available under Proteintech Group brand and is not available to purchase from any other manufacturer.

## Selected Validation Data



1x10<sup>6</sup> human PBMCs were surface stained with 0.1 ug Anti-Human CD5 Mouse Recombinant Antibody (65530-1-MR, Clone:L17F12) or Mouse IgG1 Isotype Control, and CoraLite®647-Conjugated AffiniPure Donkey Anti-Mouse IgG(H+L) at dilution 1:1000. Cells were then stained with CL488-conjugated Anti-Human CD19. Cells were not fixed. Lymphocytes were gated.



1x10<sup>6</sup> human PBMCs were surface stained with 0.1 ug Anti-Human CD5 Mouse Recombinant Antibody (65530-1-MR, Clone:L17F12) or Mouse IgG1 Isotype Control, and CoraLite®647-Conjugated AffiniPure Donkey Anti-Mouse IgG(H+L) at dilution 1:1000. Cells were not fixed. Lymphocytes were gated.