

For Research Use Only

Anti-Human CD5 (L17F12) Mouse IgG1 Recombinant Antibody, PBS Only



Catalog Number: **65530-1-PBS**

Basic Information

Catalog Number: 65530-1-PBS	GenBank Accession Number: BC027901	Purification Method: Affinity purification
Size: 100ug, 1 mg/ml	GeneID (NCBI): 921	CloneNo.: L17F12
Source: Mouse	ENSEMBL Gene ID: ENSG00000110448	
Isotype: IgG1	Full Name: CD5 molecule	
	Calculated MW: 495 aa, 55 kDa	

Applications

Tested Applications:
FC

Species Specificity:
Human

Background Information

CD5 is a type I transmembrane glycoprotein of the scavenger receptor cysteine-rich family (PMID: 12403363). CD5 is expressed on a majority of thymocytes, mature T cells, B cell subsets, and peripheral blood dendritic cells (PMID: 9858516; 6156984; 10379049; 1384337). CD5 may act as a receptor in regulating T-cell proliferation. It functions as a negative regulator of TCR signaling during thymocyte development (PMID: 7542801).

Storage

Storage:
Store at -80°C. Stable for one year after shipment.

Storage Buffer:
PBS only

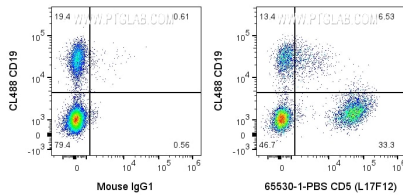
For technical support and original validation data for this product please contact:

T: 1 (888) 4PTGLAB (1-888-478-4522) (toll free in USA), or 1(312) 455-8498 (outside USA)

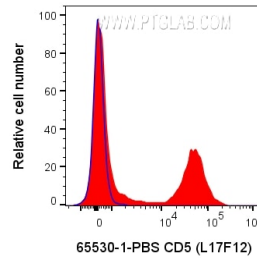
E: proteintech@ptglab.com
W: ptglab.com

This product is exclusively available under Proteintech Group brand and is not available to purchase from any other manufacturer.

Selected Validation Data



1x10⁶ human PBMCs were surface stained with 0.1 ug Anti-Human CD5 Mouse Recombinant Antibody (65530-1-PBS, Clone:L17F12) or Mouse IgG1 Isotype Control, and CoraLite®647-Conjugated AffiniPure Donkey Anti-Mouse IgG(H+L) at dilution 1:1000. Cells were then stained with CL488-conjugated Anti-Human CD19. Cells were not fixed. Lymphocytes were gated.



1x10⁶ human PBMCs were surface stained with 0.1 ug Anti-Human CD5 Mouse Recombinant Antibody (65530-1-PBS, Clone:L17F12) or Mouse IgG1 Isotype Control, and CoraLite®647-Conjugated AffiniPure Donkey Anti-Mouse IgG(H+L) at dilution 1:1000. Cells were not fixed. Lymphocytes were gated.