

For Research Use Only

Anti-Human HLA-DR (L243) Mouse IgG2a Recombinant Antibody, PBS Only

Catalog Number: 65560-1-PBS



Basic Information

Catalog Number:

65560-1-PBS

Size:

1mg, 2mg/ml

Source:

Mouse

Isotype:

IgG2a

GenBank Accession Number:

BC032350

GeneID (NCBI):

3122

ENSEMBL Gene ID:

ENSG00000204287

UNIPROT ID:

P01903

Full Name:

major histocompatibility complex,
class II, DR alpha

Calculated MW:

254 aa, 29 kDa

Purification Method:

Protein A purification

CloneNo.:

L243

Applications

Tested Applications:

FC

Species Specificity:

human

Storage

Storage:

Store at -80°C. Stable for one year after shipment.

Storage Buffer:

PBS Only

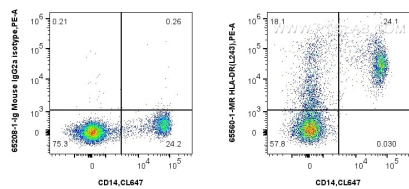
For technical support and original validation data for this product please contact:

T: 1 (888) 4PTGLAB (1-888-478-4522) (toll free
in USA), or 1(312) 455-8498 (outside USA)

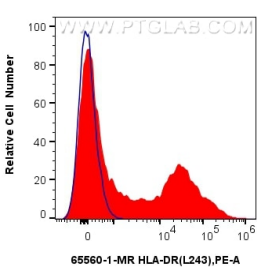
E: proteintech@ptglab.com
W: ptglab.com

This product is exclusively available under Proteintech Group brand and is not available to purchase from any other manufacturer.

Selected Validation Data



1x10⁶ human PBMCs were surface stained with 0.25 ug Anti-Human HLA-DR Mouse IgG2a Recombinant Antibody (65560-1-MR, Clone: L243) or Mouse IgG2a Isotype Control (65208-1-Ig, Clone: C1.18.4), and PE-Conjugated Goat Anti-Rabbit IgG(H+L). Cells were co-stained with APC Anti-Human CD14. Cells were incubated with FC Receptor Block prior to staining. Cells were not fixed. This data was developed using the same antibody clone with 65560-1-PBS in a



1x10⁶ human PBMCs were surface stained with 0.25 ug Anti-Human HLA-DR Mouse IgG2a Recombinant Antibody (65560-1-MR, Clone: L243)(red) or Mouse IgG2a Isotype Control (65208-1-Ig, Clone: C1.18.4) (blue), and PE-Conjugated Goat Anti-Rabbit IgG(H+L). Cells were incubated with FC Receptor Block prior to staining. Cells were not fixed. This data was developed using the same antibody clone with 65560-1-PBS in a different storage buffer formulation.

