

For Research Use Only

Anti-Human CD2 (TS1/8) Mouse IgG2a Recombinant Antibody

Catalog Number: 65565-1-MR



Basic Information

Catalog Number:

65565-1-MR

Size:

100ug, 1 mg/ml

Source:

Mouse

Isotype:

IgG2a

GenBank Accession Number:

BC033583

GeneID (NCBI):

914

ENSEMBL Gene ID:

ENSG00000116824

Full Name:

CD2 molecule

Calculated MW:

351 aa, 39 kDa

Purification Method:

Protein A purification

CloneNo.:

TS1/8

Applications

Tested Applications:

FC

Species Specificity:

human

Background Information

CD2 is a cell surface glycoprotein present on a majority of thymocytes, all mature T cells and subset of NK cells but not on B lymphocytes. It is a pan T-cell marker. CD2 interacts with lymphocyte function-associated antigen (LFA-3/CD58) and CD48/BCM1 to mediate adhesion between T-cells and other cell types. CD2 is implicated in the triggering of T-cells, the cytoplasmic domain is implicated in the signaling function.

Storage

Storage:

Store at 2-8°C. Stable for one year after shipment.

Storage Buffer:

PBS with 0.09% sodium azide.

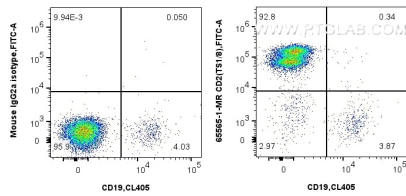
For technical support and original validation data for this product please contact:

T: 1 (888) 4PTGLAB (1-888-478-4522) (toll free in USA), or 1(312) 455-8498 (outside USA)

E: proteintech@ptglab.com
W: ptglab.com

This product is exclusively available under Proteintech Group brand and is not available to purchase from any other manufacturer.

Selected Validation Data



1x10⁶ human PBMCs were surface stained with 0.25 ug Anti-Human CD2 Mouse Recombinant Antibody (65565-1-MR, Clone:TS1/8) or Mouse IgG2a Isotype Control (65208-1-Ig, Clone: C1.18.4), and CoraLite®488-Conjugated AffiniPure Goat Anti-Mouse IgG(H+L). Cells were then stained with CoraLite® Plus 405 Anti-Human CD19. Cells were not fixed. Lymphocytes were gated.