

For Research Use Only

Anti-Human LRP1 (5A6) Mouse IgG2a Recombinant Antibody

Catalog Number: 65594-1-MR



Basic Information

Catalog Number:

65594-1-MR

Size:

100ug , 1000 µg/ml

Source:

Mouse

Isotype:

IgG2a

GenBank Accession Number:

BC045107

GeneID (NCBI):

4035

Full Name:

low density lipoprotein-related protein 1 (alpha-2-macroglobulin receptor)

Calculated MW:

505 kDa

Purification Method:

Protein A purification

CloneNo.:

5A6

Applications

Tested Applications:

FC

Species Specificity:

human

Background Information

LRP1 (Prolow-density lipoprotein receptor-related protein 1), also known as A2MR, APOER and CD91, is a type I transmembrane protein that belongs to the LDLR family. LRP1 is synthesized as a transmembrane glycosylated precursor of 600 kDa, and is subsequently cleaved to generate a large 515-kDa N-terminal extracellular subunit and an 85-kDa C-terminal transmembrane subunit, which are noncovalently associated with one another (PMID: 2112085; 8546712). LRP1 is a multifunctional receptor involved in the clearance of a large number of diverse ligands and modulating various cellular processes. LRP1 is implicated in conditions such as atherosclerosis, cancer and neurodegenerative diseases (PMID: 28381441).

Storage

Storage:

Store at 2-8°C. Stable for one year after shipment.

Storage Buffer:

PBS with 0.09% sodium azide.

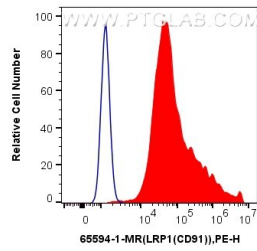
For technical support and original validation data for this product please contact:

T: 1 (888) 4PTGLAB (1-888-478-4522) (toll free in USA), or 1(312) 455-8498 (outside USA)

E: proteintech@ptglab.com
W: ptglab.com

This product is exclusively available under Proteintech Group brand and is not available to purchase from any other manufacturer.

Selected Validation Data



1x10⁶ U-87 MG cells were surface stained with 0.25 ug Anti-Human LRP1 (5A6) Mouse IgG2a Recombinant Antibody (65594-1-MR, Clone: 5A6) (red) or 0.25 ug Mouse IgG2a Isotype Control (C1.18.4) (65208-1-Ig, Clone: C1.18.4) (blue), and PE-Conjugated Goat Anti-Rabbit IgG(H+L). Cells were not fixed.