

For Research Use Only

Anti-Human CD58 (TS2/9) Mouse IgG2a Recombinant Antibody

Catalog Number: 65597-1-MR



Basic Information

Catalog Number:

65597-1-MR

Size:

100ug , 1000 µg/ml

Source:

Mouse

Isotype:

IgG2a

GenBank Accession Number:

BC005930

GeneID (NCBI):

965

Full Name:

CD58 molecule

Calculated MW:

28 kDa

Purification Method:

Protein A purification

CloneNo.:

TS2/9

Applications

Tested Applications:

FC

Species Specificity:

human

Background Information

CD58, also known as lymphocyte function-associated antigen 3 (LFA-3), is a heavily glycosylated protein of 55-70 kDa that is expressed on a broad range of hematopoietic and non-hematopoietic cells. CD58 is involved in immune recognition of tumor cells via binding of the CD2 receptor expressed on cytotoxic T cells.

Storage

Storage:

Store at 2-8°C. Stable for one year after shipment.

Storage Buffer:

PBS with 0.09% sodium azide.

For technical support and original validation data for this product please contact:

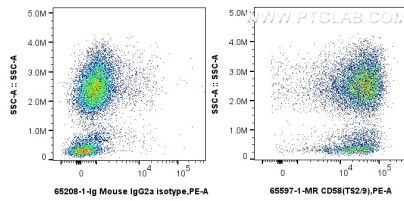
T: 1 (888) 4PTGLAB (1-888-478-4522) (toll free in USA), or 1(312) 455-8498 (outside USA)

E: proteintech@ptglab.com

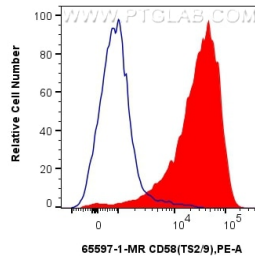
W: ptglab.com

This product is exclusively available under Proteintech Group brand and is not available to purchase from any other manufacturer.

Selected Validation Data



1x10⁶ human peripheral blood leukocytes were surface stained with 0.25 ug Anti-Human CD58 (TS2/9) Mouse IgG2a Recombinant Antibody (65597-1-MR, Clone: TS2/9) or Mouse IgG2a Isotype Control (C1.18.4) (65208-1-Ig, Clone: C1.18.4) and PE-conjugated Goat Anti-Mouse IgG. Cells were incubated with FC Receptor Block prior to staining. Cells were not fixed.



1x10⁶ human peripheral blood leukocytes were surface stained with 0.25 ug Anti-Human CD58 (TS2/9) Mouse IgG2a Recombinant Antibody (65597-1-MR, Clone: TS2/9) (red) or Mouse IgG2a Isotype Control (C1.18.4) (65208-1-Ig, Clone: C1.18.4) (blue) and PE-conjugated Goat Anti-Mouse IgG. Cells were incubated with FC Receptor Block prior to staining. Cells were not fixed.