

For Research Use Only

Anti-Human CD155/PVR (SKII.4) Mouse IgG2a Recombinant Antibody, PBS Only

Catalog Number: 65632-1-PBS



Basic Information

Catalog Number:

65632-1-PBS

Size:

1mg, 2 mg/ml

Source:

Mouse

Isotype:

IgG2a

GenBank Accession Number:

BC015542

GeneID (NCBI):

5817

Full Name:

poliovirus receptor

Calculated MW:

45 kDa

Purification Method:

Protein A purification

CloneNo.:

SKII.4

Applications

Tested Applications:

FC

Species Specificity:

human

Background Information

CD155, also known as PVR, is a type I transmembrane glycoprotein in the immunoglobulin superfamily. It contains three extracellular immunoglobulin-like domains, D1-D3, of which D1 is recognized by the virus. Mature human CD155 consists of a 323 amino acid extracellular domain with one N-terminal V-type and two C2-type Ig-like domains, a 24 amino acid transmembrane segment, and a 50 amino acid cytoplasmic tail. CD155 is thought to play a role in adhesion by interaction with the ECM component vitronectin as well as a role in NK killing of tumor cells. CD155 binds to two receptors of NK cells, CD96 and CD226, and accumulates at cell-cell contact sites, leading to the formation of mature immune synapses between NK cells and target cells. CD155 serves as the entry receptor for poliovirus and thereby mediates human susceptibility to poliovirus infection.

Storage

Storage:

Store at -80°C.

Storage Buffer:

PBS Only

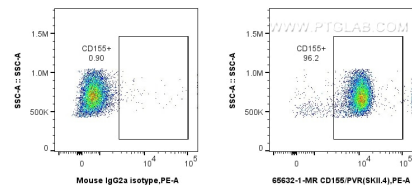
For technical support and original validation data for this product please contact:

T: 1 (888) 4PTGLAB (1-888-478-4522) (toll free in USA), or 1(312) 455-8498 (outside USA)

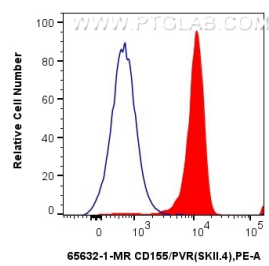
E: proteintech@ptglab.com
W: ptglab.com

This product is exclusively available under Proteintech Group brand and is not available to purchase from any other manufacturer.

Selected Validation Data



1x10⁶ human PBMCs were surface stained with 0.25 ug Anti-Human CD155/PVR (SKII.4) Mouse IgG2a Recombinant Antibody (65632-1-MR, Clone: SKII.4) or Mouse IgG2a Isotype Control, and PE-conjugated Goat Anti-Mouse IgG. Cells were incubated with FC Receptor Block prior to fixing and staining. Cells were not fixed. Monocytes were gated. This data was developed using the same antibody clone with 65632-1-PBS in a different storage buffer formulation.



1x10⁶ human PBMCs were surface stained with 0.25 ug Anti-Human CD155/PVR (SKII.4) Mouse IgG2a Recombinant Antibody (65632-1-MR, Clone: SKII.4) (red) or Mouse IgG2a Isotype Control (blue), and PE-conjugated Goat Anti-Mouse IgG. Cells were incubated with FC Receptor Block prior to fixing and staining. Cells were not fixed. Monocytes were gated. This data was developed using the same antibody clone with 65632-1-PBS in a different storage buffer formulation.

