

For Research Use Only

Anti-Mouse PLVAP (MECA-32) Rat IgG2a Recombinant Antibody, PBS Only

Catalog Number: 65664-1-PBS



Basic Information

Catalog Number:

65664-1-PBS

Size:

1mg, 2 mg/ml

Source:

Rat

Isotype:

IgG2a

GenBank Accession Number:

BC013517

GeneID (NCBI):

84094

Full Name:

plasmalemma vesicle associated protein

Purification Method:

Protein A purification

CloneNo.:

MECA-32

Applications

Tested Applications:

FC

Species Specificity:

mouse

Background Information

Plasmalemma vesicle-associated protein (PLVAP), also known as PV-1, PAL-E and MECA-32 antigen, is an endothelial cell-specific type II membrane N-glycosylated glycoprotein with a molecular weight of approximately 50-65 kDa, that forms homodimers in situ (PMID: 7626790; 30231925). The MECA-32 antibody, derived from rats immunized with murine lymph node stroma, shows high specificity for mouse endothelium in both embryonic and mature tissues (PMID: 2683264; 7626790). It recognizes most endothelial cells in the embryonic and in the adult mouse, with the exception of the brain, skeletal, and cardiac muscle, where the MECA-32 antigen has a more restricted distribution. In skeletal and cardiac muscle only small arterioles and venules express the MECA-32 antigen, while in the brain its expression is negatively correlated with the differentiation of the vasculature to form the blood brain barrier (PMID: 7626790).

Storage

Storage:

Store at -80°C.

Storage Buffer:

PBS only, pH7.3

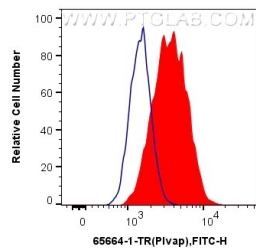
For technical support and original validation data for this product please contact:

T: 1 (888) 4PTGLAB (1-888-478-4522) (toll free in USA), or 1(312) 455-8498 (outside USA)

E: proteintech@ptglab.com
W: ptglab.com

This product is exclusively available under Proteintech Group brand and is not available to purchase from any other manufacturer.

Selected Validation Data



1×10^6 bEnd.3 cells were surface stained with 0.25 μ g Anti-Mouse PLVAP (MECA-32) Rat IgG2a RecAb (65664-1-TR, Clone: MECA-32) (red) or 0.25 μ g Rat IgG2a Isotype Control (2A3) (65209-1-Ig, Clone: 2A3) (blue), and FITC anti-Rat IgG2a antibody. Cells were not fixed. This data was developed using the same antibody clone with 65664-1-PBS in a different storage buffer formulation.