

For Research Use Only

Anti-Mouse NKp46/NCR1 (29A1.4) Rat IgG2a Recombinant Antibody, PBS Only

Catalog Number: 65667-1-PBS



Basic Information

Catalog Number:

65667-1-PBS

Size:

1mg, 2 mg/ml

Source:

Rat

Isotype:

IgG2a

GenBank Accession Number:

BC042788

GeneID (NCBI):

17086

Full Name:

natural cytotoxicity triggering receptor 1

Purification Method:

Protein A purification

CloneNo.:

29A1.4

Applications

Tested Applications:

FC

Species Specificity:

mouse

Background Information

NKp46, also known as NCR1 or CD335, is an Ig-like superfamily cell surface receptor that is highly conserved in mammals (PMID: 22021440). NKp46 is a type I transmembrane glycoprotein consisting of two extracellular Ig-like domains, a transmembrane domain, and an intracellular tail (PMID: 9730896). It is expressed on NK cells, rare T-cell subsets and a mucosal population of NKp46+ innate lymphoid cells (PMID: 9730896; 22021440). NKp46 is the major triggering receptor involved in the natural cytotoxicity (PMID: 10359120; 10092106; 15356098).

Storage

Storage:

Store at -80°C.

Storage Buffer:

PBS only, pH7.3

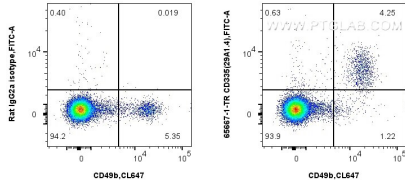
For technical support and original validation data for this product please contact:

T: 1 (888) 4PTGLAB (1-888-478-4522) (toll free in USA), or 1(312) 455-8498 (outside USA)

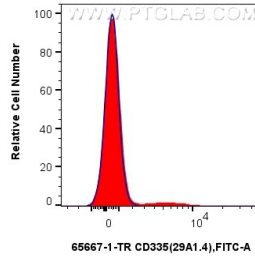
E: proteintech@ptglab.com
W: ptglab.com

This product is exclusively available under Proteintech Group brand and is not available to purchase from any other manufacturer.

Selected Validation Data



1x10⁶ mouse splenocytes were surface stained with 0.5 ug Anti-Mouse CD335 (29A1.4) Rat IgG2a RecAb (65667-1-TR, Clone:29A1.4) or Rat IgG2a Isotype Control Recombinant Antibody (98427-1-TR, Clone: 250862A1), and FITC anti-Rat IgG2a antibody. Cells were then stained with CoraLite® Plus 647 Anti-Mouse CD49b (HMA2) (CL647-65245, Clone: HMA2). Cells were not fixed. This data was developed using the same antibody clone with 65667-1-



1x10⁶ mouse splenocytes were surface stained with 0.5 ug Anti-Mouse CD335 (29A1.4) Rat IgG2a RecAb (65667-1-TR, Clone: 29A1.4) (red) or Rat IgG2a Isotype Control Recombinant Antibody (98427-1-TR, Clone: 250862A1) (blue), and FITC anti-Rat IgG2a antibody. Cells were not fixed. This data was developed using the same antibody clone with 65667-1-PBS in a different storage buffer formulation.