

For Research Use Only

# Anti-Mouse NKp46/NCR1 (29A1.4) Rat IgG2a Recombinant Antibody

Catalog Number: 65667-1-TR



## Basic Information

Catalog Number:

65667-1-TR

Size:

100ug, 1000 µg/ml

Source:

Rat

Isotype:

IgG2a

GenBank Accession Number:

BC042788

GeneID (NCBI):

17086

Full Name:

natural cytotoxicity triggering receptor 1

Purification Method:

Protein A purification

CloneNo.:

29A1.4

Recommended Dilutions:

FC: 0.5 ug per 10<sup>6</sup> cells in a 100 µl suspension

## Applications

Tested Applications:

FC

Species Specificity:

mouse

Positive Controls:

FC : mouse splenocytes,

## Background Information

NKp46, also known as NCR1 or CD335, is an Ig-like superfamily cell surface receptor that is highly conserved in mammals (PMID: 22021440). NKp46 is a type I transmembrane glycoprotein consisting of two extracellular Ig-like domains, a transmembrane domain, and an intracellular tail (PMID: 9730896). It is expressed on NK cells, rare T-cell subsets and a mucosal population of NKp46+ innate lymphoid cells (PMID: 9730896; 22021440). NKp46 is the major triggering receptor involved in the natural cytotoxicity (PMID: 10359120; 10092106; 15356098).

## Storage

Storage:

Store at 2-8°C. Stable for one year after shipment.

Storage Buffer:

PBS with 0.09% sodium azide, pH7.3

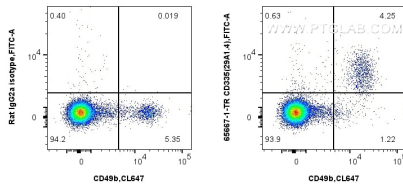
For technical support and original validation data for this product please contact:

T: 1 (888) 4PTGLAB (1-888-478-4522) (toll free in USA), or 1(312) 455-8498 (outside USA)

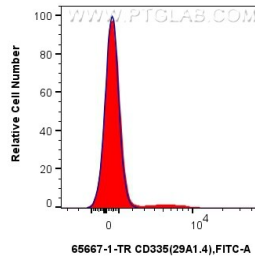
E: [proteintech@ptglab.com](mailto:proteintech@ptglab.com)  
W: [ptglab.com](http://ptglab.com)

This product is exclusively available under Proteintech Group brand and is not available to purchase from any other manufacturer.

## Selected Validation Data



1x10<sup>6</sup> mouse splenocytes were surface stained with 0.5 ug Anti-Mouse CD335 (29A1.4) Rat IgG2a RecAb (65667-1-TR, Clone:29A1.4) or Rat IgG2a Isotype Control Recombinant Antibody (98427-1-TR, Clone: 250862A1), and FITC anti-Rat IgG2a antibody. Cells were then stained with CoraLite® Plus 647 Anti-Mouse CD49b (HMA2) (CL647-65245, Clone: HMA2). Cells were not fixed.



1x10<sup>6</sup> mouse splenocytes were surface stained with 0.5 ug Anti-Mouse CD335 (29A1.4) Rat IgG2a RecAb (65667-1-TR, Clone: 29A1.4) (red) or Rat IgG2a Isotype Control Recombinant Antibody (98427-1-TR, Clone: 250862A1) (blue), and FITC anti-Rat IgG2a antibody. Cells were not fixed.