

For Research Use Only

# Anti-Mouse Ly-6C (HK1.4) Rat IgG2a Recombinant Antibody

Catalog Number: 65669-1-TR



## Basic Information

Catalog Number:

65669-1-TR

Size:

100ug, 1000 µg/ml

Source:

Rat

Isotype:

IgG2a

GenBank Accession Number:

BC010764

GeneID (NCBI):

17067

Full Name:

lymphocyte antigen 6 complex, locus FC: 0.5 ug per 10<sup>6</sup> cells in a 100 µl suspension

Purification Method:

Protein A purification

CloneNo.:

HK1.4

Recommended Dilutions:

FC: 0.5 ug per 10<sup>6</sup> cells in a 100 µl suspension

## Applications

Tested Applications:

FC

Species Specificity:

mouse

Positive Controls:

FC : mouse bone marrow cells,

## Background Information

Ly-6C (lymphocyte antigen 6 complex, locus C) is a 14-17 kDa GPI-linked cell surface antigen that belongs to the Ly-6 family of glycosyl phosphatidylinositol-anchored surface glycoproteins (PMID: 9192663). Ly-6C is expressed on mouse monocytes/macrophages, endothelial cells, granulocytes, thymocytes, and some T cell subsets (PMID: 2849552). The two alleles of Ly-6C, Ly-6C.1 and Ly-6C.2, result in differential expression of this protein on subpopulations of CD4<sup>+</sup> T cells (PMID: 15057973; 9126982). Ly-6C has been reported as a marker of memory CD8<sup>+</sup> T cells (PMID: 7543536).

## Storage

Storage:

Store at 2-8°C. Stable for one year after shipment.

Storage Buffer:

PBS with 0.09% sodium azide, pH7.3

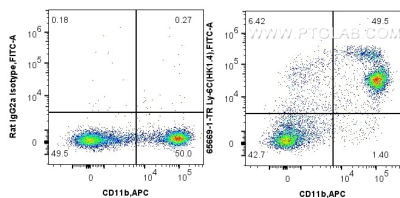
For technical support and original validation data for this product please contact:

T: 1 (888) 4PTGLAB (1-888-478-4522) (toll free in USA), or 1(312) 455-8498 (outside USA)

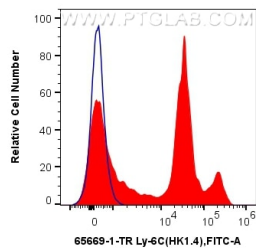
E: [proteintech@ptglab.com](mailto:proteintech@ptglab.com)  
W: [ptglab.com](http://ptglab.com)

This product is exclusively available under Proteintech Group brand and is not available to purchase from any other manufacturer.

## Selected Validation Data



1x10<sup>6</sup> mouse bone marrow cells were surface stained with 0.5 ug Anti-Mouse Ly-6C (HK1.4) Rat IgG2a RecAb (65669-1-TR, Clone: HK1.4) or Rat IgG2a Isotype Control Recombinant Antibody (98427-1-TR, Clone: 250862A1), and FITC anti-Rat IgG2a antibody. Cells were then stained with APC Anti-Mouse CD11b (M1/70) (APC-65055, Clone: M1/70). Cells were not fixed.



1x10<sup>6</sup> mouse bone marrow cells were surface stained with 0.5 ug Anti-Mouse Ly-6C (HK1.4) Rat IgG2a RecAb (65669-1-TR, Clone: HK1.4) (red) or Rat IgG2a Isotype Control Recombinant Antibody (98427-1-TR, Clone: 250862A1) (blue), and FITC anti-Rat IgG2a antibody. Cells were not fixed.