

For Research Use Only

Anti-Human HLA class I (HLA-ABC) (W6/32) Mouse IgG2a Recombinant Antibody, PBS Only

Catalog Number: 65693-1-PBS



Basic Information

Catalog Number:

65693-1-PBS

Size:

1mg, 3 mg/ml

Source:

Mouse

Isotype:

IgG2a

GenBank Accession Number:

BC003069

GeneID (NCBI):

3105

UNIPROT ID:

P04439

Full Name:

major histocompatibility complex,
class I, A

Calculated MW:

41 kDa

Purification Method:

Protein A purification

CloneNo.:

W6/32

Applications

Tested Applications:

FC

Species Specificity:

human

Background Information

Human major histocompatibility complex (MHC) antigens, also referred to as human leukocyte antigens (HLA), are encoded by genes located on the short arm of chromosome 6 (6p21.3). There are two classes of HLA antigens: class I (HLA-A, B and C) and class II (HLA-D). This class I molecules are polymorphic membrane glycoproteins composed of a heavy (alpha) chain (44 kDa) which is encoded by a HLA class I gene (HLA-A, B or C), and β 2-microglobulin light (beta) chain (12 kDa). They are involved in the presentation of foreign antigens to the immune system. (PMID: 667938; 3375250)

Storage

Storage:

Store at -80°C.

Storage Buffer:

PBS only, pH7.3

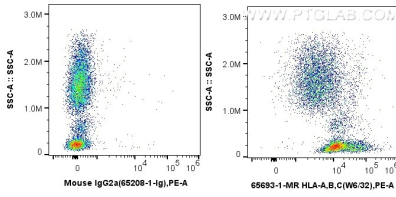
For technical support and original validation data for this product please contact:

T: 1 (888) 4PTGLAB (1-888-478-4522) (toll free
in USA), or 1(312) 455-8498 (outside USA)

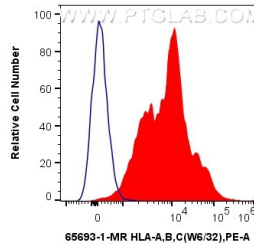
E: proteintech@ptglab.com
W: ptglab.com

This product is exclusively available under Proteintech Group brand and is not available to purchase from any other manufacturer.

Selected Validation Data



1x10⁶ human peripheral blood leukocytes were surface stained with 0.25 ug Anti-Human HLA-ABC (W6/32) Mouse IgG2a RecAb (65693-1-MR, Clone: W6/32) or 0.25 ug Mouse IgG2a Isotype Control (C1.18.4) (65208-1-Ig, Clone: C1.18.4), and PE-conjugated Goat Anti-Mouse IgG. Cells were incubated with FC Receptor Block prior to staining. Cells were not fixed. This data was developed using the same antibody clone with 65693-1-PBS in a different storage



1x10⁶ human peripheral blood leukocytes were surface stained with 0.25 ug Anti-Human HLA-ABC (W6/32) Mouse IgG2a RecAb (65693-1-MR, Clone: W6/32) (red) or 0.25 ug Mouse IgG2a Isotype Control (C1.18.4) (65208-1-Ig, Clone: C1.18.4) (blue), and PE-conjugated Goat Anti-Mouse IgG. Cells were incubated with FC Receptor Block prior to staining. Cells were not fixed. This data was developed using the same antibody clone with 65693-1-PBS in a

