

For Research Use Only

6*His, His-Tag Monoclonal antibody, PBS Only

Catalog Number: 66005-1-PBS



Basic Information

Catalog Number:

66005-1-PBS

Size:

100ug , Concentration: 1mg/ml by
Nanodrop;

Source:

Mouse

Isotype:

IgG1

GenBank Accession Number:

GeneID (NCBI):

Full Name:

Calculated MW:

0.84 kDa

Purification Method:

Protein G purification

CloneNo.:

1B7G5

Applications

Tested Applications:

WB, IF/ICC, FC, IP, ELISA

Species Specificity:

recombinant protein

Background Information

Protein tags are protein or peptide sequences located either on the C- or N- terminal of the target protein, which facilitates one or several of the following characteristics: solubility, detection, purification, localization and expression. His-tag is often used for affinity purification and binding assays. Expressed His-tagged proteins can be purified and detected easily because the string of histidine residues binds to several types of immobilized metal ions, including nickel, cobalt and copper, under specific buffer conditions. The His-tag antibody is a useful tool for monitoring of the His-tagged proteins, and recognizes His-tags placed at N-terminal, C-terminal, and internal regions of fusion proteins expressed in bacteria, insect, and mammalian cells.

Storage

Storage:

Store at -80°C.

Storage Buffer:

PBS Only

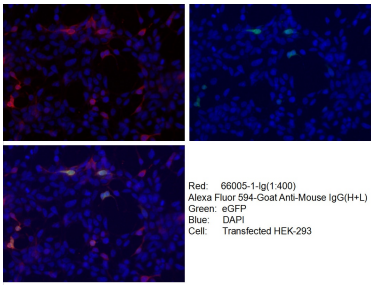
For technical support and original validation data for this product please contact:

T: 1 (888) 4PTGLAB (1-888-478-4522) (toll free
in USA), or 1(312) 455-8498 (outside USA)

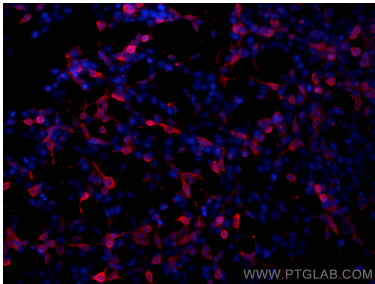
E: proteintech@ptglab.com
W: ptglab.com

This product is exclusively available under Proteintech Group brand and is not available to purchase from any other manufacturer.

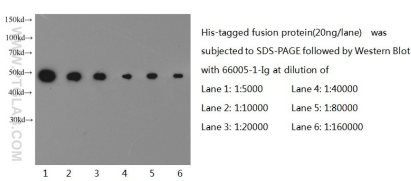
Selected Validation Data



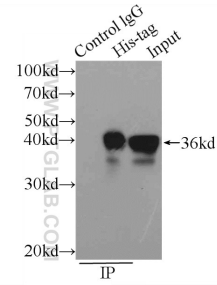
Immunofluorescent analysis of (-20°C Ethanol) fixed Transfected HEK-293 cells using 66005-1-Ig (6^{*}His, His-Tag antibody) at dilution of 1:400 and Alexa Fluor 594-Conjugated AffiniPure Goat Anti-Mouse IgG(H+L). This data was developed using the same antibody clone with 66005-1-PBS in a different storage buffer formulation.



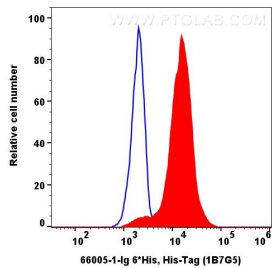
Immunofluorescent analysis of (-20°C Ethanol) fixed Transfected HEK-293 cells using 6^{*}His, His-Tag antibody (66005-1-Ig, Clone: 1B7G5) at dilution of 1:800 and CoraLite®594-Conjugated AffiniPure Goat Anti-Mouse IgG(H+L) (SA00013-1). This data was developed using the same antibody clone with 66005-1-PBS in a different storage buffer formulation.



Western blot of 6^{*}His-tagged fusion protein with anti-6^{*}HIS tag (66005-1-Ig) at various dilutions. This data was developed using the same antibody clone with 66005-1-PBS in a different storage buffer formulation.



IP result of anti-6^{*}His, His-Tag (IP:66005-1-Ig, 7ug; Detection:66005-1-Ig 1:10000) with Transfected HEK-293 cells lysate 300ug. This data was developed using the same antibody clone with 66005-1-PBS in a different storage buffer formulation.



1x10⁶ His tagged FGFR2 Transfected HEK-293 cells were surface stained with 0.2 μg 6^{*}His, His-Tag Monoclonal antibody (66005-1-Ig, Clone:1B7G5, red) and CoraLite488-conjugated Goat Anti-Mouse IgG(H+L) (Cat.NO. SA00013-1). Mouse IgG1 isotype control (66360-1-Ig, Clone: 1F8D3, blue) was parallel stained as control. Cells were not fixed. This data was developed using the same antibody clone with 66005-1-PBS in a different storage buffer formulation.