

For Research Use Only

# GEFT Monoclonal antibody, PBS Only

Catalog Number: 66012-1-PBS



## Basic Information

<b>Catalog Number:</b> 66012-1-PBS	<b>GenBank Accession Number:</b> BC012860	<b>Purification Method:</b> Protein A purification
<b>Size:</b> 100ug, Concentration: 1mg/ml by Nanodrop;	<b>GeneID (NCBI):</b> 115557	<b>CloneNo.:</b> 5A11F8
<b>Source:</b> Mouse	<b>UNIPROT ID:</b> Q86VW2	
<b>Isotype:</b> IgG2a	<b>Full Name:</b> RhoA/RAC/CDC42 exchange factor	
<b>Immunogen Catalog Number:</b> AG10819	<b>Calculated MW:</b> 64 kDa	
	<b>Observed MW:</b> 53 kDa, 63 kDa	

## Applications

**Tested Applications:**  
WB, IHC, IF/ICC, FC (Intra), Indirect ELISA

**Species Specificity:**  
human, mouse, rat, pig, rabbit

## Background Information

GEFT, also named as p63RhoGEF, may play a role in actin cytoskeleton reorganization in different tissues since its activation induces formation of actin stress fibers. It works as a guanine nucleotide exchange factor for Rho family of small GTPases. GETF links specifically G alpha q/11-coupled receptors to RHOA activation. GEFT may be an important regulator of processes involved in axon and dendrite formation. In neurons seems to be an exchange factor primarily for RAC1. It is involved in skeletal myogenesis. GEFT is expressed as three isoforms (64, 53 and 68kDa).

## Storage

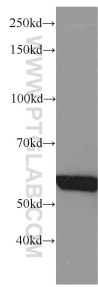
**Storage:**  
Store at -80°C.

**Storage Buffer:**  
PBS Only

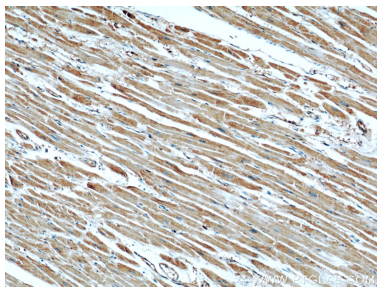
For technical support and original validation data for this product please contact:  
T: 1 (888) 4PTGLAB (1-888-478-4522) (toll free in USA), or 1(312) 455-8498 (outside USA)  
E: [proteintech@ptglab.com](mailto:proteintech@ptglab.com)  
W: [ptglab.com](http://ptglab.com)

This product is exclusively available under Proteintech Group brand and is not available to purchase from any other manufacturer.

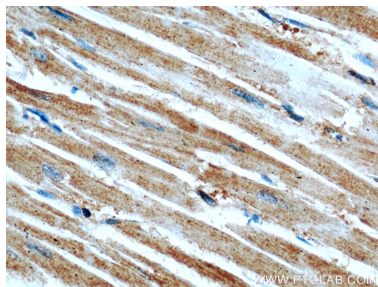
Selected Validation Data



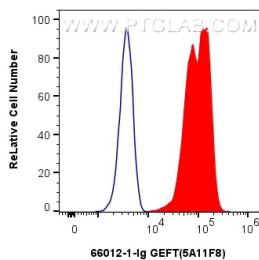
mouse skeletal muscle tissue were subjected to SDS PAGE followed by western blot with 66012-1-Ig (GEFT antibody) at dilution of 1:1000 incubated at room temperature for 1.5 hours. This data was developed using the same antibody clone with 66012-1-PBS in a different storage buffer formulation.



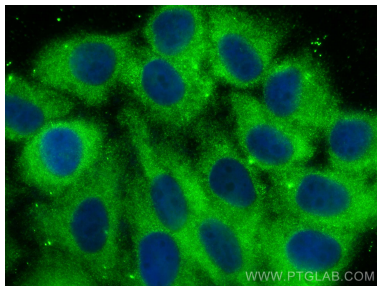
Immunohistochemical analysis of paraffin-embedded human heart using 66012-1-Ig(GEFT antibody) at dilution of 1:50 (under 10x lens). This data was developed using the same antibody clone with 66012-1-PBS in a different storage buffer formulation.



Immunohistochemical analysis of paraffin-embedded human heart using 66012-1-Ig(GEFT antibody) at dilution of 1:50 (under 40x lens). This data was developed using the same antibody clone with 66012-1-PBS in a different storage buffer formulation.



1x10<sup>6</sup> HEK-293 cells were intracellularly stained with 0.8 ug GEFT Monoclonal antibody (66012-1-Ig, Clone:5A11F8) and CoraLite®488-Conjugated AffiniPure Goat Anti-Mouse IgG(H+L) (SA00013-1)(red), or 0.8 ug Mouse IgG2a isotype control Mouse McAb (66360-2-Ig, Clone: 11A1B2) (blue). Cells were fixed with 4% PFA and permeabilized with Flow Cytometry Perm Buffer (PF00011-C). This data was developed using the same antibody clone with 66012-1-PBS in a



Immunofluorescent analysis of (-20°C Ethanol) fixed HepG2 cells using GEFT antibody (66012-1-Ig, Clone: 5A11F8 ) at dilution of 1:800 and CoraLite®488-Conjugated AffiniPure Goat Anti-Mouse IgG(H+L) (SA00013-1). This data was developed using the same antibody clone with 66012-1-PBS in a different storage buffer formulation.