

For Research Use Only

# TPPII Monoclonal antibody, PBS Only



Catalog Number: 66017-1-PBS

Featured Product

## Basic Information

Catalog Number:

66017-1-PBS

Size:

100ug, Concentration: 1 mg/ml by Nanodrop;

Source:

Mouse

Isotype:

IgG2b

Immunogen Catalog Number:

AG5296

GenBank Accession Number:

BC039905

GeneID (NCBI):

7174

UNIPROT ID:

P29144

Full Name:

tripeptidyl peptidase II

Calculated MW:

1249 aa, 138 kDa

Observed MW:

135 kDa

Purification Method:

Protein A purification

CloneNo.:

5H6F11

## Applications

Tested Applications:

WB, IF, IHC, Indirect ELISA

Species Specificity:

human

## Background Information

TPPII (Tripeptidyl-peptidase 2) is an evolutionary conserved serine peptidase of the subtilisin family that removes tripeptides from the free NH<sub>2</sub> terminus of oligopeptides. The 138-kDa TPP2 polypeptide forms large oligomeric complexes of >1,000 kDa that are detected in the cytoplasm of all cell types. In addition, a membrane associated TPP 2 isoform is present in most cells (PMID:15735022).

## Storage

Storage:

Store at -80°C.

Storage Buffer:

PBS Only

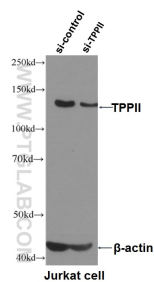
For technical support and original validation data for this product please contact:

T: 1 (888) 4PTGLAB (1-888-478-4522) (toll free in USA), or 1(312) 455-8498 (outside USA)

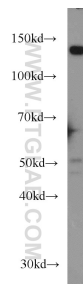
E: [proteintech@ptglab.com](mailto:proteintech@ptglab.com)  
W: [ptglab.com](http://ptglab.com)

This product is exclusively available under Proteintech Group brand and is not available to purchase from any other manufacturer.

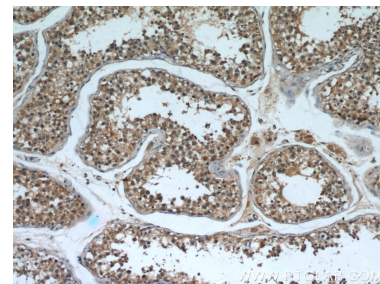
## Selected Validation Data



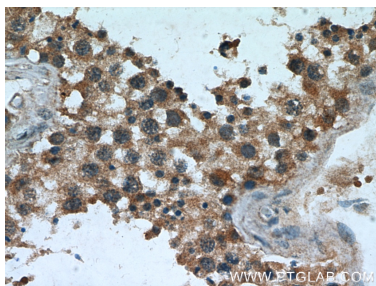
WB result of TPPII antibody (66017-1-Ig, 1:4000) with si-control and si-TPPII transfected Jurkat cells. This data was developed using the same antibody clone with 66017-1-PBS in a different storage buffer formulation.



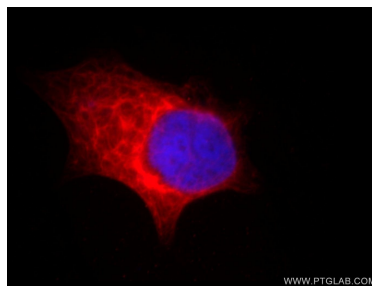
HeLa cells were subjected to SDS PAGE followed by western blot with 66017-1-Ig (TPPII antibody) at dilution of 1:1000 incubated at room temperature for 1.5 hours. This data was developed using the same antibody clone with 66017-1-PBS in a different storage buffer formulation.



Immunohistochemical analysis of paraffin-embedded human testis using 66017-1-Ig (TPPII antibody) at dilution of 1:50 (under 10x lens). This data was developed using the same antibody clone with 66017-1-PBS in a different storage buffer formulation.



Immunohistochemical analysis of paraffin-embedded human testis using 66017-1-Ig (TPPII antibody) at dilution of 1:50 (under 40x lens). This data was developed using the same antibody clone with 66017-1-PBS in a different storage buffer formulation.



Immunofluorescent analysis of HeLa cells, using TPP2 antibody 66017-1-Ig at 1:25 dilution and Rhodamine-labeled goat anti-mouse IgG (red). Blue pseudocolor = DAPI (fluorescent DNA dye). This data was developed using the same antibody clone with 66017-1-PBS in a different storage buffer formulation.