

For Research Use Only

Bcl-XL Monoclonal antibody

Catalog Number: 66020-1-Ig **21 Publications**



Basic Information

| | | |
|---|--|--|
| Catalog Number: 66020-1-Ig | GenBank Accession Number: BC019307 | Purification Method: Protein A purification |
| Size: 150ul, Concentration: 1398 µg/ml by Nanodrop and 1000 µg/ml by Bradford method using BSA as the standard; | GeneID (NCBI): 598 | CloneNo.: 4C12A6 |
| Source: Mouse | Full Name: BCL2-like 1 | Recommended Dilutions: WB 1:2000-1:20000 IHC 1:200-1:600 IF 1:10-1:100 |
| Isotype: IgG2b | Calculated MW: 26 kDa | |
| Immunogen Catalog Number: AG18037 | Observed MW: 30 kDa | |

Applications

Tested Applications:
FC, IF, IHC, WB, ELISA

Cited Applications:
CoIP, IHC, IP, WB

Species Specificity:
human, mouse, rat

Cited Species:
human, mouse

Note-IHC: suggested antigen retrieval with TE buffer pH 9.0; (*) Alternatively, antigen retrieval may be performed with citrate buffer pH 6.0

Positive Controls:

WB: Jurkat cells, A431 cells, HeLa cells, Ramos cells, K-562 cells, Raw 264.7 cells

IHC: human breast cancer tissue, human lymphoma tissue, human testis tissue, human colon tissue

IF: HeLa cells,

Background Information

BCL2L1 is a member of the BCL-2 protein family. BCL2L1 is expressed as three isoforms, Bcl-X(L), Bcl-X(s) and Bcl-X(beta), and is located at the outer mitochondrial membrane. The Bcl-XL isoform is a 233 amino acid protein, acting as an apoptotic inhibitor. Bcl-XL can form heterodimers with BAX, BAK or BCL2, and the heterodimerization with BAX does not seem to be required for anti-apoptotic activity. The Bcl-XS isoform is a shorter variant that is 178 amino acids in length and lacks a 63 amino acid region (amino acids 126-188), acting as an apoptotic activator.

Notable Publications

| Author | Pubmed ID | Journal | Application |
|--------------|-----------|----------------------|-------------|
| Yingjie Qing | 34603598 | Oxid Med Cell Longev | WB |
| Liling Jiang | 36082692 | Clin Transl Med | WB |
| Xi Chen | 33174023 | Mol Med Rep | WB |

Storage

Storage:

Store at -20°C. Stable for one year after shipment.

Storage Buffer:

PBS with 0.02% sodium azide and 50% glycerol pH 7.3.

Aliquoting is unnecessary for -20°C storage

*** 20ul sizes contain 0.1% BSA

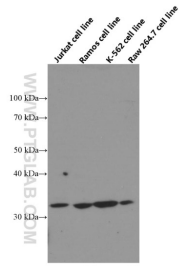
For technical support and original validation data for this product please contact:

T: 1 (888) 4PTGLAB (1-888-478-4522) (toll free in USA), or 1(312) 455-8498 (outside USA)

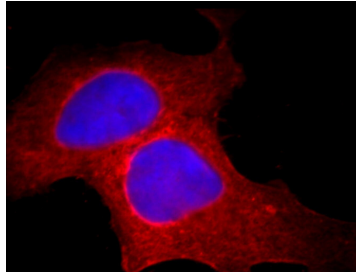
E: proteintech@ptglab.com
W: ptglab.com

This product is exclusively available under Proteintech Group brand and is not available to purchase from any other manufacturer.

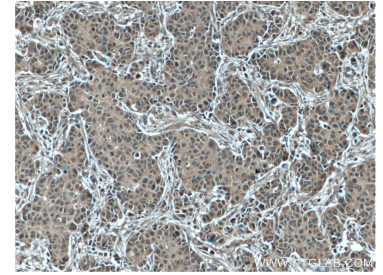
Selected Validation Data



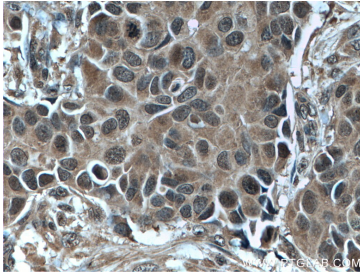
Jurkat, Ramos, K-562 and Raw 264.7 cells were subjected to SDS PAGE followed by western blot with 66020-1-Ig (Bcl-xL Antibody) at dilution of 1:20000 incubated at room temperature for 1.5 hours.



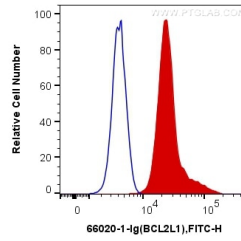
Immunofluorescent analysis of HeLa cells, using BCL2L1 antibody 66020-1-Ig at 1:25 dilution and Rhodamine-labeled goat anti-mouse IgG (red). Blue pseudocolor = DAPI (fluorescent DNA dye).



Immunohistochemical analysis of paraffin-embedded human breast cancer tissue slide using 66020-1-Ig (Bcl-XL antibody) at dilution of 1:600 (under 10x lens. Heat mediated antigen retrieval with Tris-EDTA buffer (pH 9.0).



Immunohistochemical analysis of paraffin-embedded human breast cancer tissue slide using 66020-1-Ig (Bcl-XL antibody) at dilution of 1:600 (under 40x lens. Heat mediated antigen retrieval with Tris-EDTA buffer (pH 9.0).



1×10^6 HeLa cells were intracellularly stained with 0.4 ug Anti-Human Bcl-XL (66020-1-Ig, Clone:4C12A6) and Coralite®488-Conjugated AffiniPure Goat Anti-Mouse IgG(H+L) at dilution 1:1000 (red), or 0.4 ug Control Antibody. Cells were fixed and permeabilized with Transcription Factor Staining Buffer Kit (PF00011).