

For Research Use Only

# Bcl-XL Monoclonal antibody

Catalog Number: 66020-1-Ig **23 Publications**



## Basic Information

<b>Catalog Number:</b> 66020-1-Ig	<b>GenBank Accession Number:</b> BC019307	<b>Purification Method:</b> Protein A purification
<b>Size:</b> 150ul , Concentration: 800 ug/ml by Nanodrop and 767 ug/ml by Bradford method using BSA as the standard;	<b>GeneID (NCBI):</b> 598	<b>CloneNo.:</b> 4C12A6
<b>Source:</b> Mouse	<b>UNIPROT ID:</b> Q07817	<b>Recommended Dilutions:</b> WB 1:2000-1:20000 IHC 1:200-1:600 IF/ICC 1:200-1:800
<b>Isotype:</b> IgG2b	<b>Full Name:</b> BCL2-like 1	
<b>Immunogen Catalog Number:</b> AG18037	<b>Calculated MW:</b> 26 kDa	
	<b>Observed MW:</b> 30 kDa	

## Applications

<b>Tested Applications:</b> WB, IHC, IF/ICC, FC (Intra), ELISA	<b>Positive Controls:</b> <b>WB :</b> Jurkat cells, A431 cells, HeLa cells, Ramos cells, K-562 cells, Raw 264.7 cells <b>IHC :</b> human breast cancer tissue, human lymphoma tissue, human testis tissue, human colon tissue <b>IF/ICC :</b> HeLa cells,
<b>Cited Applications:</b> WB, IHC, IF, IP, CoIP	
<b>Species Specificity:</b> human, mouse, rat	
<b>Cited Species:</b> human, mouse	
<b>Note-IHC: suggested antigen retrieval with TE buffer pH 9.0; (*) Alternatively, antigen retrieval may be performed with citrate buffer pH 6.0</b>	

## Background Information

BCL2L1 is a member of the BCL-2 protein family. BCL2L1 is expressed as three isoforms, Bcl-X(L), Bcl-X(s) and Bcl-X(beta), and is located at the outer mitochondrial membrane. The Bcl-XL isoform is a 233 amino acid protein, acting as an apoptotic inhibitor. Bcl-XL can form heterodimers with BAX, BAK or BCL2, and the heterodimerization with BAX does not seem to be required for anti-apoptotic activity. The Bcl-XS isoform is a shorter variant that is 178 amino acids in length and lacks a 63 amino acid region (amino acids 126-188), acting as an apoptotic activator.

## Notable Publications

Author	Pubmed ID	Journal	Application
Yingjie Qing	34603598	Oxid Med Cell Longev	WB
Liling Jiang	36082692	Clin Transl Med	WB
Xi Chen	33174023	Mol Med Rep	WB

## Storage

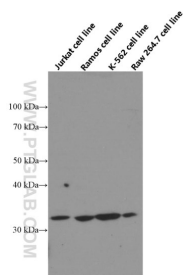
**Storage:**  
Store at -20°C. Stable for one year after shipment.  
**Storage Buffer:**  
PBS with 0.02% sodium azide and 50% glycerol pH 7.3.  
Aliquoting is unnecessary for -20°C storage

\*\*\* 20ul sizes contain 0.1% BSA

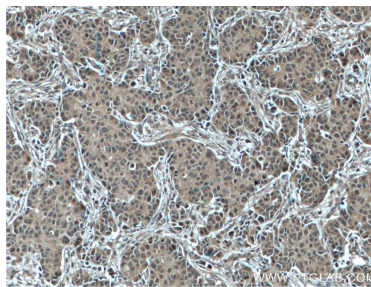
For technical support and original validation data for this product please contact:  
T: 1 (888) 4PTGLAB (1-888-478-4522) (toll free in USA), or 1(312) 455-8498 (outside USA)  
E: proteintech@ptglab.com  
W: ptglab.com

This product is exclusively available under Proteintech Group brand and is not available to purchase from any other manufacturer.

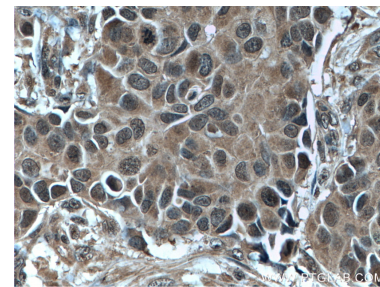
## Selected Validation Data



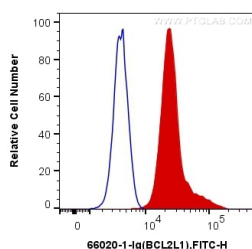
Jurkat, Ramos, K-562 and Raw 264.7 cells were subjected to SDS PAGE followed by western blot with 66020-1-Ig (Bcl-xL Antibody) at dilution of 1:20000 incubated at room temperature for 1.5 hours.



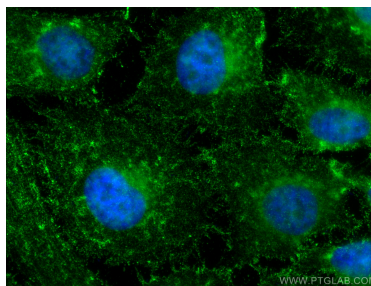
Immunohistochemical analysis of paraffin-embedded human breast cancer tissue slide using 66020-1-Ig (Bcl-XL antibody) at dilution of 1:600 (under 10x lens. Heat mediated antigen retrieval with Tris-EDTA buffer (pH 9.0).



Immunohistochemical analysis of paraffin-embedded human breast cancer tissue slide using 66020-1-Ig (Bcl-XL antibody) at dilution of 1:600 (under 40x lens. Heat mediated antigen retrieval with Tris-EDTA buffer (pH 9.0).



1X10<sup>6</sup> HeLa cells were intracellularly stained with 0.4 ug Anti-Human Bcl-XL (66020-1-Ig, Clone:4C12A6) and CoraLite®488-Conjugated Goat Anti-Mouse IgG(H+L) at dilution 1:1000 (red), or 0.4 ug Control Antibody. Cells were fixed and permeabilized with Transcription Factor Staining Buffer Kit (PF00011).



Immunofluorescent analysis of (4% PFA) fixed HeLa cells using Bcl-XL antibody (66020-1-Ig, Clone: 4C12A6) at dilution of 1:400 and CoraLite®488-Conjugated Goat Anti-Mouse IgG(H+L).