

For Research Use Only

CDC6 Monoclonal antibody

Catalog Number: 66021-1-Ig



Basic Information

Catalog Number: 66021-1-Ig	GenBank Accession Number: BC025232	Purification Method: Protein G purification
Size: 150ul , Concentration: 1000 µg/ml by 990 Nanodrop;	GeneID (NCBI): 990	CloneNo.: 6F12D2
Source: Mouse	UNIPROT ID: Q99741	Recommended Dilutions: WB 1:2000-1:16000 IF 1:20-1:200
Isotype: IgG1	Full Name: cell division cycle 6 homolog (S. cerevisiae)	
Immunogen Catalog Number: AG17958	Calculated MW: 560 aa, 63 kDa	
	Observed MW: 65 kDa	

Applications

Tested Applications: IF, WB, ELISA	Positive Controls:
Species Specificity: human, rat, mouse	WB : HeLa cells, NIH/3T3 cells, ROS1728 cells, HEK-293T cells, Jurkat cell, Raji cells
	IF : HepG2 cells,

Background Information

CDC6, also named as CDC18L and HsCDC18, belongs to the CDC6/cdc18 family. It is involved in the initiation of DNA replication and functions as a regulator at the early steps of DNA replication. It also participates in checkpoint controls that ensure DNA replication is completed before mitosis is initiated. It localizes in cell nucleus during cell cycle G1, but translocates to the cytoplasm at the start of S phase. The subcellular translocation of this protein during cell cycle is regulated through its phosphorylation by Cdk. Defects in CDC6 are the cause of Meier-Gorlin syndrome type 5 (MGORS5). MGORS5 is a syndrome characterized by bilateral microtia, aplasia/hypoplasia of the patellae, and severe intrauterine and postnatal growth retardation with short stature and poor weight gain. This antibody is a mouse monoclonal antibody raised against residues near the C terminus of human CDC6.

Storage

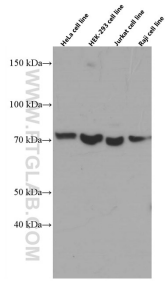
Storage:
Store at -20°C. Stable for one year after shipment.
Storage Buffer:
PBS with 0.02% sodium azide and 50% glycerol pH 7.3.
Aliquoting is unnecessary for -20°C storage

*** 20ul sizes contain 0.1% BSA

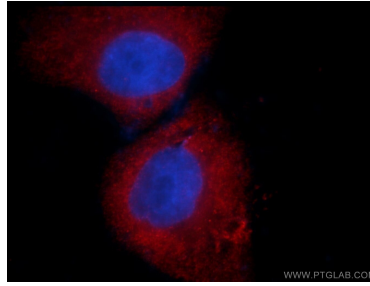
For technical support and original validation data for this product please contact:
T: 1 (888) 4PTGLAB (1-888-478-4522) (toll free in USA), or 1(312) 455-8498 (outside USA)
E: proteintech@ptglab.com
W: ptglab.com

This product is exclusively available under Proteintech Group brand and is not available to purchase from any other manufacturer.

Selected Validation Data



Various lysates were subjected to SDS PAGE followed by western blot with 66021-1-Ig (CDC6 antibody) at dilution of 1:8000 incubated at room temperature for 1.5 hours.



Immunofluorescent analysis of HepG2 cells using 66021-1-Ig (CDC6 antibody) at dilution of 1:50 and Rhodamine-Goat anti-Mouse IgG.