

For Research Use Only

ECM1 Monoclonal antibody

Catalog Number: 66023-1-Ig



Basic Information

Catalog Number: 66023-1-Ig	GenBank Accession Number: BC023505	Purification Method: Protein A purification
Size: 150ul , Concentration: 1360 µg/ml by Bradford method using BSA as the standard;	GeneID (NCBI): 1893	CloneNo.: 6A12B3
Source: Mouse	Full Name: extracellular matrix protein 1	Recommended Dilutions: WB 1:500-1:1000 IHC 1:20-1:200
Isotype: IgG2a	Calculated MW: 540 aa, 61 kDa	
Immunogen Catalog Number: AG17955	Observed MW: 61 kDa	

Applications

Tested Applications: IHC, WB, ELISA	Positive Controls: WB : MCF7 cells, COLO 320 cells, human heart tissue
Species Specificity: human	IHC : human breast cancer tissue, human liver cancer tissue
Note-IHC: suggested antigen retrieval with TE buffer pH 9.0; (*) Alternatively, antigen retrieval may be performed with citrate buffer pH 6.0	

Background Information

Extracellular matrix protein 1 (ECM1) is a glycoprotein involved in a number of biological processes such as bone formation, skin differentiation, cell proliferation, and promotes angiostasis. Pathologically, ECM1 contributes to the formation and metastasis of several types of cancer including breast, thyroid and hepatocellular cancers. (21128013) It inhibits MMP9 proteolytic activity.

Storage

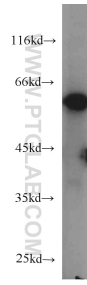
Storage:
Store at -20°C. Stable for one year after shipment.
Storage Buffer:
PBS with 0.02% sodium azide and 50% glycerol pH 7.3.
Aliquoting is unnecessary for -20°C storage

*** 20ul sizes contain 0.1% BSA

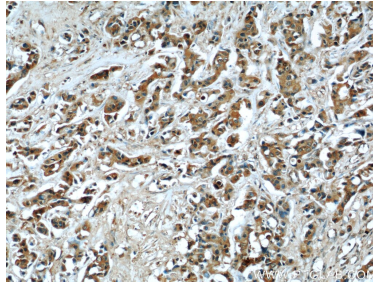
For technical support and original validation data for this product please contact:
T: 1 (888) 4PTGLAB (1-888-478-4522) (toll free in USA), or 1(312) 455-8498 (outside USA)
E: proteintech@ptglab.com
W: ptglab.com

This product is exclusively available under Proteintech Group brand and is not available to purchase from any other manufacturer.

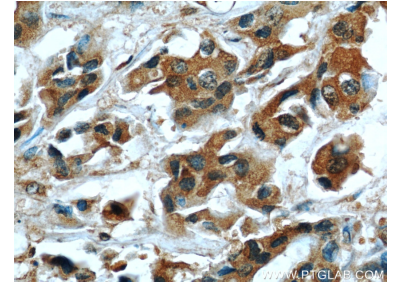
Selected Validation Data



MCF7 cells were subjected to SDS PAGE followed by western blot with 66023-1-Ig (ECM1 antibody) at dilution of 1:500 incubated at room temperature for 1.5 hours.



Immunohistochemical analysis of paraffin-embedded human breast cancer using 66023-1-Ig(ECM1 antibody) at dilution of 1:50 (under 10x lens).



Immunohistochemical analysis of paraffin-embedded human breast cancer using 66023-1-Ig(ECM1 antibody) at dilution of 1:50 (under 40x lens).